

△ 本手册由浙江益豪电气有限公司印制，仅用于说明部分产品相关的参数信息。  
益豪电气随时可能因技术升级或采用新的生产工艺而改进本手册相关内容，或  
对本手册的印刷错误及不准确的信息进行必要的改进和更改，恕不另行通知。  
商家订货时请随时联系本公司，以证实相关信息。

♻️ 采用环保纸印刷

 鼎信传媒 全案策划本手册! 158 6949 9988

**EHIGH**  
益豪电气



**浙江益豪电气有限公司**  
ZHEJIANG YIHAO ELECTRIC CO.,LTD.

地址：浙江省温州市乐清市柳市镇象阳深河工业区

手机：139 6897 7999 / 150 6770 8518

电话：0577-6172 0588

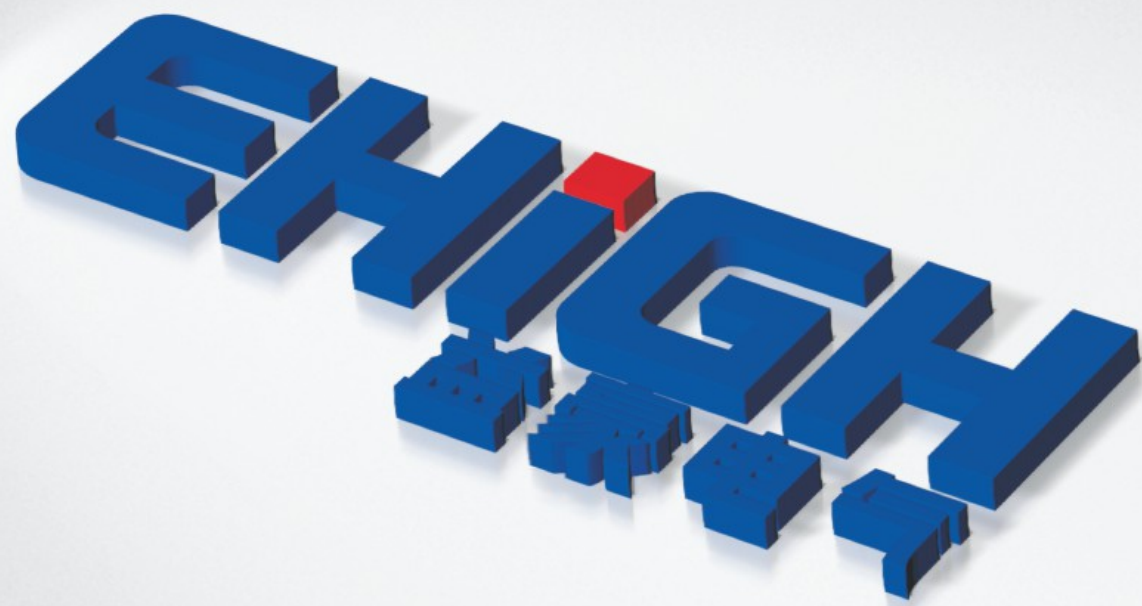
邮箱：eh@cnehdq.com

网址：www.cnehdq.com



扫描浏览企业网站

**浙江益豪电气有限公司**  
ZHEJIANG YIHAO ELECTRIC CO.,LTD.



## 企业定位

电力安全稳定的守护者  
服务国计民生的倡导者

Guardians of electricity security and stability  
Advocates of serving the national economy  
and people's livelihood

## 核心价值

同心同行，共赢致和  
Walk together, Win-win

## 经营理念

诚信为先，品质为本  
Integrity first,quality first

## 使命

为连接电力而生  
为构建安全高效的电力网络而奋斗

Born to connect to electricity  
Striving to build a safe and efficient power network

## 精神

努力超越，追求卓越  
Strive to surpass,The pursuit of excellence

## 宗旨

为电力行业服务  
Serve the power industry

## 发展理念

安全 经济 绿色 高效  
Safety,economic,green,Efficient



Awe in quality  
Technological innovation

敬畏质量 科创恒新

#### 关于益豪 About Yihao

浙江益豪电气有限公司，坐落在依山傍水、水陆交通便利的“中国电器之都”——柳市，紧靠世界地质文化遗产公园——雁荡山。公司自成立以来不断引进国内外高压预制式电缆附件、组合式变压器配件及电缆分接箱的核心技术，完善生产工艺，提升产品品质。益豪电气是一家集生产、销售和售后服务于一体的科技型规模企业。益豪公司厂房占地面积2378平方，建筑面积2698平方，公司员工39人。

公司拥有橡胶制品复合成型设备，高压电气试验室，局放检测设备，X光检测设备，橡胶制品相关性能检测设备及净化级的生产车间。同时采用科学的ERP管理模式，健全的ISO 9001:2008质量管理体系。我们的产品在众多项目中得到广泛应用，产品远销国内外，好评如潮。公司产品均已通过电力工业电气设备质量检验检测中心检测合格并获产品检测报告。公司产品执行标准经浙江省质量技术监督局备案。

我们本着“质量从优，管理从严，顾客满意，源于诚信”的经营理念愿与电力行业客户携手跨步发展。

Zhejiang Yihao Electric Co., Ltd., located in Liushi, the "Electric Capital of China". Since its establishment, the company has continuously introduced core technologies for medium-voltage prefabricated cable accessories, composite transformer accessories, and cable junction boxes from both domestic and international sources, while improving manufacturing processes and enhancing product quality. Yihao Electric is a technology-oriented company that integrates production, sales, and after-sales service.



**EHIGH**  
益豪电气有限公司

**EHIGH**  
益豪电气



#### 关于益豪 About Yihao

4%-5%  
平均每年将4%-5%的销售额  
用于创新研发

益豪

益豪创新 智造未来  
Smart innovation for a better future



# 精工

工欲善其事 必先利其器  
To be good at work,  
you must first sharpen it

**严谨品管，细致检测**  
**Rigorous quality control**  
**Meticulous testing**

公司置产品品质于重要位置，完善的质量管理系统结合优质配套生产设备，保障产品从研发，生产到销售的系统一体化。公司品质部门配备了多台精密检测仪器，制订严格的品质标准。以精确严谨的品管态度，做到从原材料到成品的全方面品质控制。每项作业流程都经过严格的管制，确保产品合格，树立“益豪”品质标杆。

Adhering to the business philosophy of "superior quality, strict management, customer satisfaction, and integrity," we are willing to join hands with customers in the power industry to achieve mutual development.



**益豪**

益智创新 豪铸丰碑  
Smart innovation, Cast a monument



**EHIGH**  
益豪电气

**细做**  
潜精研思 科技驱动  
Latent research thinking  
Technology driven

**创新研发，构建益豪核心力量**  
Innovative research and development  
Build the core strength of Yihao

益豪电气拥有完善的产品研发体系，既保证了在竞争对手中最短的开发周期，又保证了产品批量生产的质量要求，优秀的产品，重在过程的规范化。每一个小小的问题都是我们需要解决的大事件，每一个配件都饱含了我们精益求精的态度，科技研发是我们不断发展，优化产品的根本动力，力争成为电缆附件领域的领军企业，为更多的客户解决技术问题。

We possess equipment for rubber product composite molding, medium-voltage electrical testing laboratories, partial discharge detection equipment, X-ray inspection equipment, rubber product performance testing equipment, and clean production workshops.

Every small problem is a major event that we need to solve, and every component embodies our attitude of continuous improvement. Technological research and development are the fundamental driving force behind our constant growth and product optimization. We strive to become a leading enterprise in the field of cable accessories, aiming to solve technical problems for a wider range of customers.



**益豪**  
益智创新 豪铸丰碑  
Smart innovation, Cast a monument

**载誉**  
每一份证书  
都是我们实力的体现  
Are all manifestations of our strength

峥嵘岁月 数载辉煌  
Glorious past  
Many achievements

以优良的产品赢得顾客，以细致的服务赢得市场及社会各界高度赞誉，在保证产品质量的同时，抓好企业建设，为社会创福利，为人民贡献是企业的最终目的。

追求“零缺陷，稳定精益品质”作为电缆附件的专业生产厂家，益豪人秉承“创新无止境，服务不停息”的经营理念。倡导以绩效为导向的“务实、创新、知耻、敏行”的企业精神，奉行“诚信为本，共建共享”的价值观。

With scientific EPR management model and ISO 9001:2008 quality management system, our products have been widely applied in numerous projects and are well received both domestically and internationally. Our products have passed the inspection and testing conducted by the Electric Power Industry Electrical Equipment Quality Inspection and Testing Center, obtaining product testing reports. All products comply with the execution standards recorded by the Zhejiang Provincial Bureau of Quality and Technical Supervision.



证书名称  
Certificate  
name

企业营业执照

质量管理体系  
认证证书

检测报告

**益豪**  
益智创新 豪铸丰碑  
Smart innovation, Cast a monument



## 发展应用 Development Application

胡锦涛主席曾提到“电力系统的安全运行关系广大群众的生活，关系经济社会发展的全局”。现代电网是国家能源运输体系的重要组成部分，是保障安全可靠优质供电的物质基础，也是支撑地方经济发展的重要基础设施。在现代电力电网的布局和建设电缆附件拥有不可或缺的地位，虽微小却是电力连接、电力设备中的必备部件。

水电厂、垃圾发电厂、太阳能发电厂、核能发电厂等各类发电厂在电力生产中的转换与传输，车站、机场、高铁、货运等各类轨道交通运输，以及小区用电、医疗用电、商业用电等生活生产用电均离不开大量输电设备与变电设备。输电变电设备的电力传输连接转换都需要电力电缆附件的使用，所以电缆附件的品质也在一定程度上决定了电力传输的稳定与安全。

在这个国民经济高速发展的时代，服务实现国家能源战略目标、满足社会发展对电力的需求、推动电网装备技术创新升级、保障高效稳定供电，是所有电力设备供应商的责任，也是益豪电气的责任。益豪电气认真做好每一个小细节，严审每一个出厂产品的品质，坚持做好每一个电力工程项目的服务。更安全、更高效、更绿色、更稳定便是益豪电气始终不变的信念。

Hydropower plants, waste-to-energy plants, solar power plants, nuclear power plants, and various types of power plants rely on the conversion and transmission of electricity in power generation. Rail transportation systems such as stations, airports, high-speed trains, and freight services, as well as residential areas, medical facilities, commercial establishments, and other aspects of daily life and production, all require a significant amount of power transmission and substation equipment. The electrical transmission, connection, and conversion of these devices necessitate the extensive use of cable accessories.

## 产品知识 Products Information

电力电缆附件是连接电缆与输配电线路及相关配电装置的产品，一般指电缆线路中各种电缆的中间连接及终端连接，其作用如下：外层有起屏蔽作用的半导体电层，可触摸，确保人身安全；独特的应力锥结构，有限地疏散电场应力，解决电缆屏蔽层切断处电场应力问题；可扩展性，拆装灵活，可完成电缆“T”型连接；全封闭，全绝缘，全防护，免维护，抗淹没，抗污秽等。它与电缆一起构成电力输送网络；电缆附件主要是依据电缆结构的特性，既能恢复电缆的性能，又保证电缆长度的延长及终端的连接。拥有电性能稳定、密封结构可靠、抗弯、防震、安装工艺简单、便于现场施工等特点。

其中电缆插头广泛应用于户外配电变压器、箱式变压器、环网柜、电缆分支箱、地埋变压器等电气设备的连接，具有良好的热稳定性、密封性和热力学性能。拥有无最小相间安全距离要求；无需任何特殊工具，安装简单；与适合的套管或插头接合，达到全屏蔽和全密封可分离连接；可长期在水下和其他恶劣的条件下运行等优势。

Our products are widely used for the connection of outdoor distribution transformers, compact substations, ring main units, cable branch boxes, and underground transformers, among other electrical equipment. They possess excellent thermal stability, sealing properties, and thermodynamic performance. Our products have no minimum phase-to-phase safety distance requirements and can be installed easily without the need for any special tools. When combined with appropriate sleeves or plugs, they achieve fully shielded and fully sealed separable connections. Additionally, they have the advantage of long-term operation underwater and in other harsh conditions.

发电变电  
Power generation and transformation

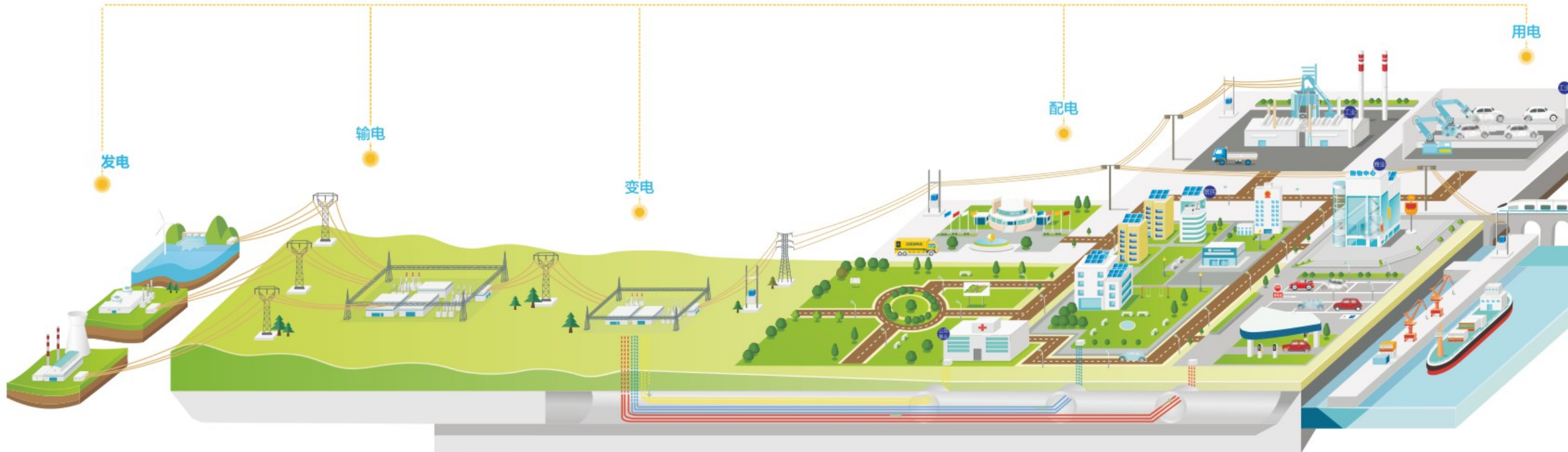
电力传输  
Power transmission

工业用电  
Industrial electricity

生活用电  
Electricity for life

商业用电  
Commercial electricity

轨道交通  
track, traffic



# 服务

贴近客户 快速反应  
Close to customers,  
quick response

关注点滴细节 把握每一个客户  
Pay attention to details  
Grasp every customer

采用灵活多样化的市场营销策略，积极开展以客户为中心的营销策划工作，并做好细致的售后服务。成熟的生产工艺、严谨的工作作风和完善的质量管理体系是我们的生产标准，保证优质的技术服务是我们维护客户的售后保障。益豪电气保证从原材料采购、产品制造、销售环节以及售后服务都将做到完美。

By adopting flexible and diversified marketing strategies, we actively engage in customer-centric marketing planning and provide meticulous after-sales services. Our mature production processes, rigorous work attitude, and comprehensive quality management system serve as our production standards. Ensuring high-quality technical services is our commitment to maintaining post-sales support for our customers. Yihao Electric guarantees excellence in every aspect, including raw material procurement, product manufacturing, sales, and after-sales services.

## 售前 Pre-sale

- ★有效的商务管理团队  
Professional business management team
- ★协助客户项目投标支持  
Bidding support
- ★协助客户项目预报价  
Pre quotation
- ★技术支持项目评审及初步方案  
Project assessment

## 售中 Sale

- ★雄厚的技术力量  
Professional technical support
- ★人性化的设计方案  
Flexible design
- ★强大的生产实力  
Powerful production ability
- ★完善的质量管理系统  
Perfect quality management system

## 售后 After sale

- ★快速反应的售后保障  
Quick response after-sale support
- ★24小时售后服务电话  
24 hours service
- ★快速提供解决方案  
Quick solution
- ★技术人员到达现场服务  
On-site service

益豪

益智创新 豪铸丰碑  
Smart innovation, Cast a monument



### 技术研发

平均每年将4%-5%的销售额用于创新研发



### 专业团队

共同愿景、共同价值观  
共同使命、共同战略目标



### 先进设备

投入资金购置先进的科研设备  
引进现代化电力技术



### 智能化操作

不断改进设备、贴合客户操作习惯  
提高可操作性便捷性与效率



### 自主产权

产品设计独特、品质卓越、构造精巧  
注重自主研发，拥有多项专利



### 品质保障

精工细造、保障每一个设备的出厂品质  
每一个员工都是质检员



### 营销服务

售前服务：技术交流、方案设计  
售中服务：订单跟踪、物流配送  
售后服务：培训、调试、维护、备件



### 节能环保

在满足客户对高性能、低排放产品需求的同时也为地球生态环境承担共同的保护，  
推进节能减排、实现循环发展





目录  
益智创新 豪铸丰碑  
Smart innovation  
Cast a monument



**EH Q3-15/630**  
8.7/15kV 欧式前接头  
European style front connector  
01



**EH H3-15/630**  
8.7/15kV 欧式后接头  
European style rear connector  
03



**EH HBLQ-17/45(50)kV**  
欧式后接避雷器  
European style rear lightning arrester  
05



**EH JYM-12kV/630A**  
欧式绝缘帽  
European style insulating cap  
07



**EH Q3-24kV/630A**  
欧式前接头  
European style front connector  
09



**EH H3-24kV/630A**  
欧式后接头  
European style rear connector  
11



**EH HBLQ-24kV**  
欧式后接避雷器  
European style rear lightning arrester  
13



**EH JYM-24kV/630A**  
欧式绝缘帽  
European style insulating cap  
15



**EH Q3-35kV/630A**  
欧式前接头  
European style front connector  
17



**EH Q3-35kV/630A**  
美式前接头  
American style front connector  
19



**EH H3-35kV/630A**  
欧式后接头  
European style rear connector  
21



**EH HBLQ-35kV**  
欧式后接避雷器  
European style rear lightning arrester  
23



**EH JYM-35kV/630A**  
欧式、美式绝缘帽  
European style, American style insulating cap  
25



**EH CK-12kV/630A**  
侧扩母联器  
Side bus coupler  
27



屏蔽型3T电缆软连接  
Shielded 3T cable soft connection  
Side bus coupler  
28



顶部母线系统应用示例  
Application examples  
29



**26/35(40.5)kV**  
顶扩屏蔽型母线连接器  
Top expansion shielded busbar connector  
31



**EH PT 15kV/200A**  
PT肘型头  
PT elbow head  
33



肘型PT插头  
Elbow type PT plug  
34



**EH SYZD-15kV/630A**  
开关柜外锥型套管试验终端  
Tapered casing test terminal of switch cabinet  
35



**EH CSB-624**  
试验终端  
Test terminal  
35



提升柜母联  
Lift the motherboard  
36



**15kV**  
SF6 集成节点开关柜快速连接器  
SF6 integrated node switch cabinet quick connector  
37



**15kV**  
环保集成节点开关柜快速连接器  
Environmental protection integrated node switch cabinet quick connector  
38



**10kV**  
环保柜快插  
10kV Environmental cabinet quick connector  
39



**10kV**  
旁路作业柔性快接电缆—OT+快速插拔接头(螺栓连接型)  
10kV bypass operation flexible quick connect cable OT+ quick plug connector (bolt connection type)  
40



**10kV**  
快速插拔接头  
10kV Quick plug connector  
41



**10kV**  
快插接头外壳  
10kV Quick connector shell  
42



**10kV**  
前插型快插  
10kV Front type quick connector  
43



**10kV**  
后插型快插  
10kV Rear type quick connector  
44



目录  
益智创新 豪铸丰碑  
Smart innovation  
Cast a monument

EHIGH  
益豪电气

				
EH-12-239 环保柜顶扩套管 Environmental protection cabinet top expansion sleeve	EH-12-250 环保柜计量套管 Environmental protection cabinet metering sleeve	EH-12-252 环保柜顶扩套管 Environmental protection cabinet top expansion sleeve	EH-12-259.5 环保柜套管 Environmental protection cabinet casing	EH-12-260 环保柜套管 Environmental protection cabinet casing
45	45	46	46	47

				
EH-230-250A 环保柜取电套管 Environmental protection cabinet outlet sleeve	EH-12-88 环保柜侧扩套管 Environmental protection cabinet outlet sleeve	EH-93.5 常压密封侧扩套管 Atmospheric sealing side expansion sleeve	EH-98.2 常压密封侧扩套管 Atmospheric sealing side expansion sleeve	EH-127 环保柜侧扩套管 Environmental protection cabinet side expansion sleeve
47	48	48	49	49

				
EH-12-130 环保柜侧扩套管(II型) Side expansion sleeve of special- shaped environmental protection cabinet (type II)	EH-12-24/1250A 侧扩套管 Side expansion sleeve	EH-12-181 方形套管 Square casing	EH-12-181 圆形套管 Circular casing	EH-12-202 套管 Casing
50	50	51	51	52

					
EH-12-220 套管 Casing	EH-12-235 套管 Casing	EH-12-250 环保柜计量套管 Environmental protection cabinet metering sleeve	EH-24-289 计量柜套管 Metering cabinet casing	EH-12-62 侧扩套管 Side expansion casing	EH-12-64.5 侧扩套管 Side expansion casing
52	53	53	54	54	55

					
EH-12-67 侧扩套管 Side expansion casing	EH-12-475 熔丝筒(侧出线) Fuse cartridge (side outlet)	EH 24kV 固封式熔丝筒 Fixed fuse cartridge	EH 12kV 带帽熔丝筒 Capped fuse cartridge	EH-12-475 熔丝筒(顶出线) Fuse cartridge (ejection line)	EH-12-134 对接套管 Butt sleeve
55	56	56	57	57	58

					
EH-12-254 对接套管 Butt sleeve	EH-12-260 一体式伞裙套管 One-piece umbrella skirt casing	EH-12-280 一体式伞裙套管 One-piece umbrella skirt casing	EH 12-24kV 手提盖 Hand cover	10kV 绝缘塞 10kV Insulating plug	24kV 绝缘塞 24kV Insulating plug
58	59	59	60	60	61

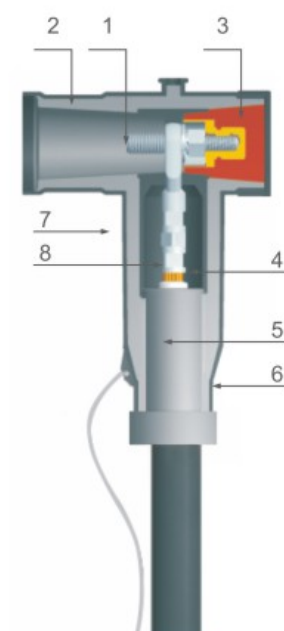
益豪  
Smart innovation, Cast a monument







8.7/15kV-630A 欧式前接头  
8.7/15kV-630A Shielded Fore-Connector



产品结构图  
Illustrate Design Integrity

## 应用 Application

- 通过630A预制式接头实现单相或三相绝缘电缆和变压器、开关柜、分支箱等其他设备的连接。
- 适用于户内和户外安装。
- 最高系统电压15kV
- 持续额定电流630A (900A过载可持续8小时)
- 电缆特性
  - 聚合物绝缘 (XLPE、ERP等)
  - 铜或铝导体
  - 具有半导体或金属屏蔽
  - 导体尺寸: 12kV 25-400mm<sup>2</sup>
- For connection of polymeric cable to transformers, switchgear, motors and other equipment with a premoulded separable connector.
- For indoor and outdoor installations.
- System voltage up to 15 kV.
- Continuous current 630 A (900 A overload for 8 hours).
- Cable particulars:
  - Polymeric cable (XLPE, EPR, etc.)
  - Copper or aluminum conductors
  - Semiconducting or metallic screens
  - Conductor size 12kV 25-120 mm<sup>2</sup>

## 产品构造 Product Structure

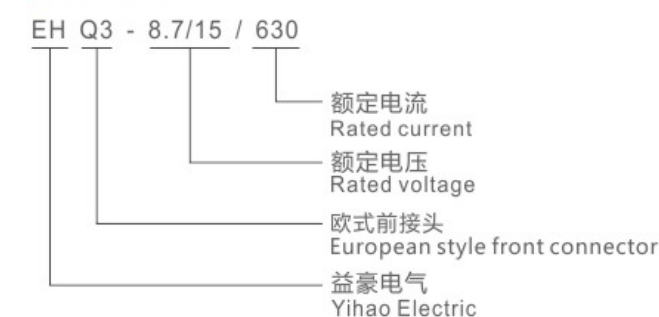
1. 双头螺栓: 不锈钢螺栓确保导体和套管紧密配合。
2. 绝缘层: 特有的配方和混合技术确保预制EPDM绝缘橡胶的优质品质。
3. 绝缘子: 环氧树脂绝缘子内含有带螺纹金属件可以确保与双头螺栓紧密配合。
4. 内半导体层: 预制的EPDM导电橡胶有效的控制电气应力。
5. 应力锥: 不同尺寸的应力锥配合电缆接头使用, 能确保水密封以及电缆应力释放。
6. 接地眼: 预注到外屏蔽中用于接地线的连接。
7. 外半导体层: 预制的EPDM导电橡胶与电缆屏蔽层搭接使屏蔽连续, 并确保外半导体层处于接地状态。
8. 压接端子: 全铜或铜铝压接端子适用于铜或铝导体。

- 1.TWO HEAD SCREW: To make sure have a good contact with the apparatusbushing.
- 2.INSULATION: Moulded EPDM insulating rubber is formulated and mixed in-house to ensure high quality.
- 3.INSULATING PLUG: Moulded epoxy insulating plug provides excellent electrical, thermal and mechanical reliability.
- 4.SEMI-CONDUCTIVE INSERT: Moulded EPDM conducting rubber screen control electrical stress.
- 5.STRESS RELIEF: The configuration of the outer screen and the cable adapter provide cable stress relief.
- 6.GROUNDING EYE: Moulded into the external screen for connection of an earthing wire.
- 7.SEMI-CONDUCTIVE SHIELD: Moulded EPDM conducting rubber mates with the cable screen to maintain screen continuity and ensure that the assembly is at earth potential.
- 8.CONDUCTOR CABLE LUG: Aluminum compression connector is sized to ensure a cool running connector with maximum current transfer.

## 15kV电缆型号配置表 Order information

产品型号 Reference No.	多股线芯绞成同心的 电缆截面积(mm <sup>2</sup> ) Conductor cross section (mm <sup>2</sup> )	电缆绝缘层外径(mm) Stretch range over insulation (mm)	电缆型号 Cable Type	对应代号 Size of stress cone
EHQ3-15/630-25	25	16.6	8.7/15	A
EHQ3-15/630-35	35	17.6	8.7/15	A
EHQ3-15/630-50	50	19	8.7/15	A
EHQ3-15/630-70	70	20.6	8.7/15	B
EHQ3-15/630-95	95	22.2	8.7/15	B
EHQ3-15/630-120	120	23.6	8.7/15	C
EHQ3-15/630-150	150	25.2	8.7/15	C
EHQ3-15/630-185	185	26.7	8.7/15	D
EHQ3-15/630-240	240	29	8.7/15	D
EHQ3-15/630-300	300	31.2	8.7/15	E
EHQ3-15/630-400	400	34.4	8.7/15	E
EHQ3-15/630-500	500	37.2	8.7/15	F

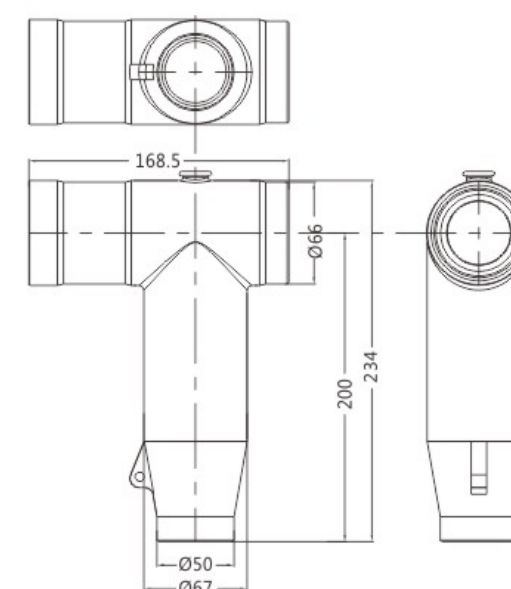
## 定货编号说明 Inference Information



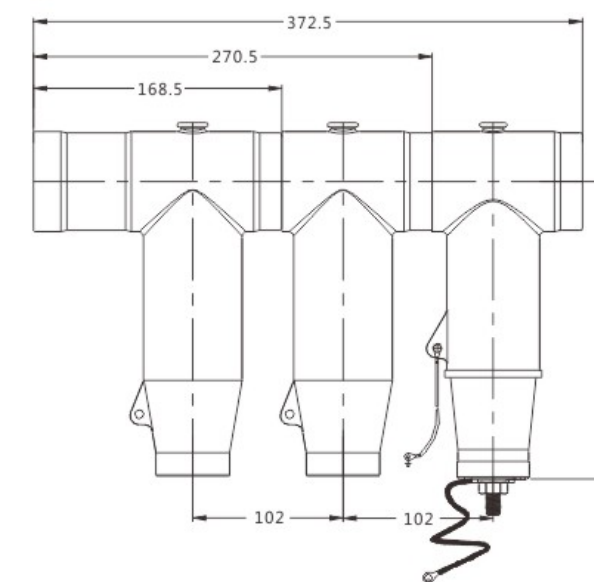
## 标准包装 Scope of Delivery

- 欧式前接头本体
- 绝缘塞(含半导体封帽)
- 防尘帽(非绝缘保护帽)
- 应力锥
- 压接端子
- 双头螺栓
- 硅脂、清洁纸
- 安装指导说明书
- 产品合格证
- T Fore connector
- Insulation plug
- Covering cap
- Adaptor
- Conductor cable lug
- Two-head Screw
- Silicone Lubricant、Clearing Paper
- Installation Instruction Sheet
- Quality Certificate

## 外形尺寸图 Dimensions

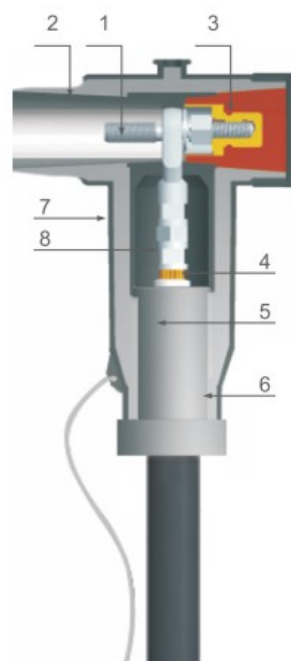


## 产品组合图 Product Portfolio Diagram





15kV/630A 欧式后接头  
15kV/630A European rear connector



产品结构图  
Illustrate Design Integrity

## 概述 General

630A欧式后接头可和欧式前接头或另外的后接头连接,提供扩展的电缆连接回路(分支),它不能直接和套管座、穿墙套管连接。其尾部可直接用绝缘塞堵塞,也可扩展连接另一路欧式后接头或后避雷器。

630A European after connector can be use together with the T Fore connector and some other back connector, it can be provide more branches, and they can not together with the bushing directly, cover the back protection cap on the end of the blanking cover.

## 性能 Features

- 当与适合的套管或插头配合时，提供全屏蔽和全密封可分离连接；
  - 可长期在水下和其他恶劣的条件下运行；
  - 内置式电容测试点用以测定线路带电状态或安装带电指示器；
  - 无最小相间安全距离要求；
  - 安装可以是垂直、水平或任意角度。
- Provides a fully screened and fully submersible separable connection when mated with the proper bushing or plug. Can be used under the circumstances.
  - Built-in capacitive test point to determine the circuit status or install a fault indicator.
  - No minimum phase clearance requirements.
  - Mounting can be vertical, horizontal, or any angle in between.

## 产品构造 Product Structure

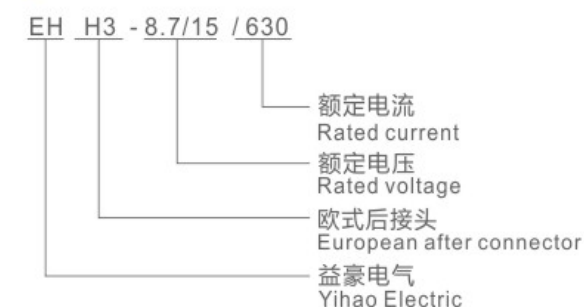
1. 双头螺栓：不锈钢螺栓确保导体和套管紧密配合。
2. 绝缘层：特有的配方和混合技术确保预制EPDM绝缘橡胶的优质品质。
3. 绝缘子：环氧树脂绝缘子内含有带螺纹金属件可以确保与双头螺栓紧密配合。
4. 内半导电层：预制的EPDM导电橡胶有效的控制电气应力。
5. 应力锥：不同尺寸的应力锥配合电缆接头使用，能确保水密封以及电缆应力释放。
6. 接地眼：预注到外屏蔽中用于接地线的连接。
7. 外半导电层：预制的EPDM导电橡胶与电缆屏蔽层搭接使屏蔽连续，并确保外半导电层处于接地状态。
8. 压接端子：全铜或铜铝压接端子适用于铜或铝导体。

1. **TWO HEAD SCREW:** To make sure have a good contact with the apparatus bushing.
2. **INSULATION:** Moulded EPDM insulating rubber is formulated and mixed in-house to ensure high quality.
3. **INSULATING PLUG:** Moulded epoxy insulating plug provides excellent electrical, thermal and mechanical reliability.
4. **SEMI-CONDUCTIVE INSERT:** Moulded EPDM conducting rubber screen control electrical stress.
5. **STRESS RELIEF:** The configuration of the outer screen and the cable adapter provide cable stress relief.
6. **GROUNDING EYE:** Moulded into the external screen for connection of an earthing wire.
7. **SEMI-CONDUCTIVE SHIELD:** Moulded EPDM conducting rubber mates with the cable screen to maintain screen continuity and ensure that the assembly is at earth potential.
8. **CONDUCTOR CABLE LUG:** Aluminum compression connector is sized to ensure a cool running connector with maximum current transfer.

## 15kV电缆型号配置表 Order information

产品型号 Reference No.	多股线芯绞成同心的 电缆截面积(mm <sup>2</sup> ) Conductor cross section (mm <sup>2</sup> )	电缆绝缘层外径(mm) Stretch range over insulation (mm)	电缆 型号 Cable Type	对应代号 Size of stress cone
EHH3-15/630-25	25	16.6	8.7/15	A
EHH3-15/630-35	35	17.6	8.7/15	A
EHH3-15/630-50	50	19	8.7/15	A
EHH3-15/630-70	70	20.6	8.7/15	B
EHH3-15/630-95	95	22.2	8.7/15	B
EHH3-15/630-120	120	23.6	8.7/15	C
EHH3-15/630-150	150	25.2	8.7/15	C
EHH3-15/630-185	185	26.7	8.7/15	D
EHH3-15/630-240	240	29	8.7/15	D
EHH3-15/630-300	300	31.2	8.7/15	E
EHH3-15/630-400	400	34.4	8.7/15	E
EHH3-15/630-500	500	37.2	8.7/15	F

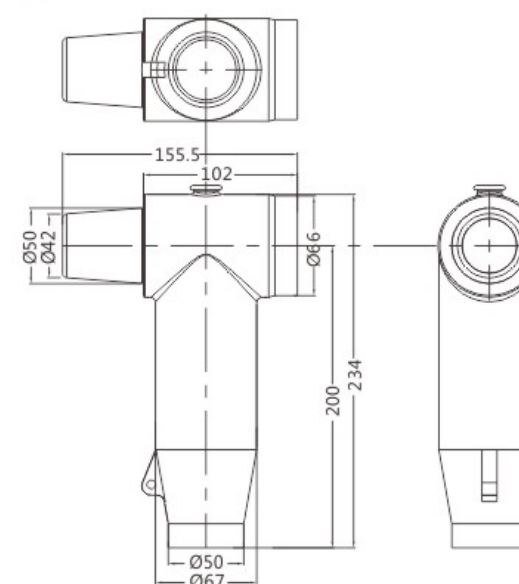
### 定货编号说明 Inference Information



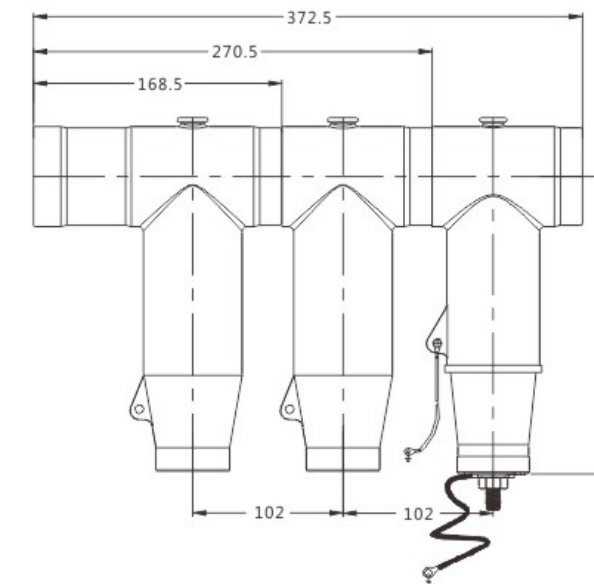
### 标准包装 Scope of Delivery

- |                |                                     |
|----------------|-------------------------------------|
| ● 630A 欧式后接头本体 | ● 630A European after connector     |
| ● 应力锥          | ● Adaptor                           |
| ● 压接端子         | ● Conductor cable lug               |
| ● 连接铜棒         | ● Connect lug                       |
| ● 双头螺栓         | ● Two head screw                    |
| ● 硅脂、清洁纸       | ● Silicone Lubricant、Clearing Paper |
| ● 安装指导说明书      | ● Installation Instruction Sheet    |
| ● 产品合格证        | ● Quality Certificate               |

### 外形尺寸图 Dimensions

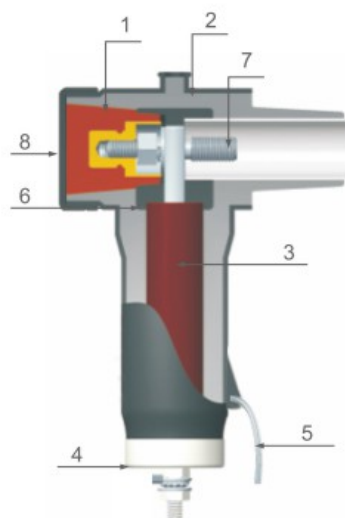


### 产品组合图 Product Portfolio Diagram





17/45(50)kV 欧式后接避雷器  
17/45(50)kV European-style followed by arrester



产品构造图  
Illustrate Design Integrity

## 概述 General

欧式后接避雷器能为电气系统提供可靠的过电压保护。屏蔽型的后接避雷器的外半导体层确保了安装和维护人员的人身安全及设备的安全运行,同时其抗紫外线,抗老化,防水,防潮的特有性能确保了产品在恶劣环境下的安全可靠运行。

欧式后接避雷器与欧式前接头配合，确保电网安全运行。

European-style followed by arrester provide a reliable protective medium voltage net work. using the semi-conductive shield to make sure the per-son is safe and the equipment can work well, also they have the high quantity to make sure they can work in the circumstances.

European-style followed by arrester can be use together with the European front connector.

### 订货信息 Order Information

产品名称 Description	订货编号 Reference No.
17/50kV欧式后接避雷器 European-style followed by arrester	EH HBLQ-17/50
17/45kV欧式后接避雷器 European-style followed by arrester	EH HBLQ-17/45

## 产品构造 Product Structure

1. 绝缘层：特有配方和混合技术确保预制EPDM绝缘橡胶的优质品质。
2. 外半导电层：预制的EPDM导电橡胶符合IEEE592标准。
3. 避雷器芯子：由经过特殊工艺处理的氧化锌避雷器阀片组成。
4. 铜质底盖：铜质底盖与避雷器外导电层紧密结合，使避雷器有效防水，并为避雷器提供接地点。
5. 接地线：避雷器下端自带的接地线，用于将雷电冲击电压有效吸引到接地位置。
6. 内半导电层：预制的EPDM导电橡胶有效的控制电气应力。
7. 双头螺栓：镀锡的铜螺栓确保导体和套管紧密配合。
8. 绝缘子端盖：使产品具有绝缘密封作用。

1. Insulation layer: special formula and mixing technology ensure the high quality of prefabricated EPDM insulation rubber.
2. Outer semi conductive layer: prefabricated EPDM conductive rubber meets IEEE592 standard.
3. Arrestor core: it is composed of zinc oxide arrester valve blade treated by special process.
4. Copper bottom cover: the copper bottom cover is closely combined with the external conductive layer of the arrester, so that the arrester is effectively waterproof, and provides a grounding point for the arrester.
5. Grounding wire: the grounding wire attached at the lower end of the arrester is used to effectively lead the lightning impulse voltage to the grounding position.
6. Inner semi conductive layer: prefabricated EPDM conductive rubber can effectively control electrical stress.
7. Stud bolt: tinned copper bolt ensures the close fit between conductor and bushing.
8. Insulator end cap: make the product have insulating sealing effect.

### 定货编号说明 Inference Information

EH HBLQ - 17 / 45(50)

—— 额定电压 Rated voltage

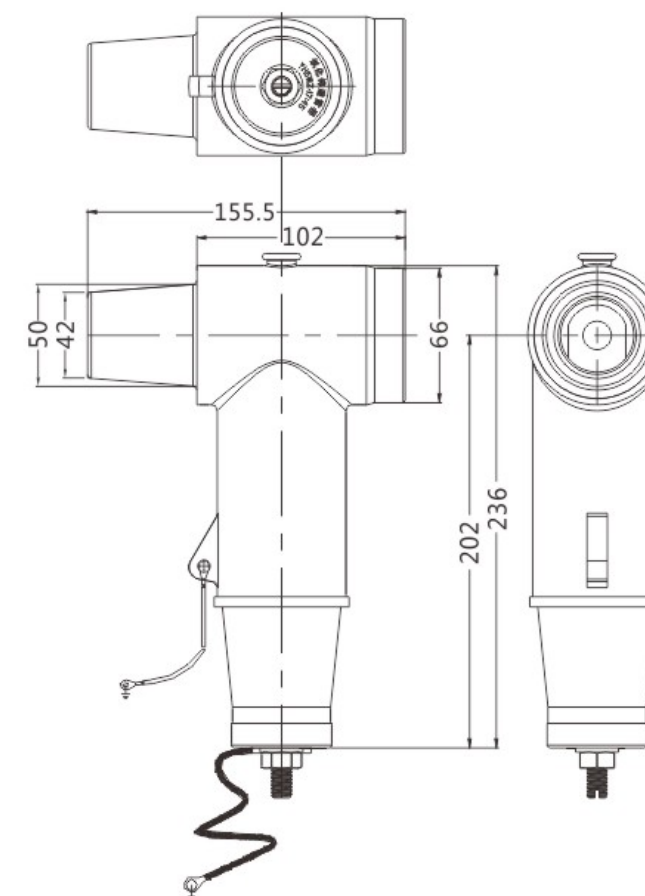
—— 欧式后接避雷器 European-style followed by arrester

—— 益豪电气 Yihao Electric

### 标准包装 Scope of Delivery

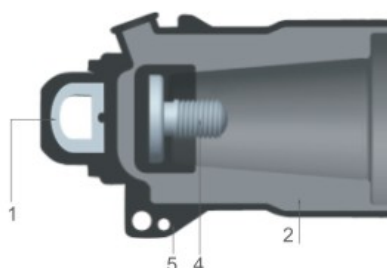
- 避雷器本体
- 双头螺杆
- 连接铜棒
- 硅脂
- 清洁纸
- 测试报告
- 安装指导说明书
- 产品合格证
- Arrester body
- Two head screw
- Insulator
- Clearing paper
- Silicone lubricant
- Testing report
- Installation instruction sheet
- Quality certificate

### 外形尺寸图 Dimensions





带接地线的标准绝缘帽  
Insulated Protective Cap



产品构造图  
Illustrate Design Integrity

## 概述 General

12kV 630A绝缘帽是带电套管的附属配件，为带电套管提供绝缘封套，对不带电的接头提供防尘、防潮封套。

630A绝缘帽可以安装在630A套管、母排及壁挂等设备上，当母排和电缆接头预留有备用出线时，必须用630A绝缘帽将其密封。

12kV 630A Insulated Protective Cap is an accessory device designed to electrically insulate and mechanically seal load break bushing interfaces. When mated to a load break product and the drain wire is attached to ground, the Insulated Protective Cap provides a fully shielded, submersible insulating cover for energized bushings. The Insulated Protective Cap can be used for permanent or temporary installation on 200A bushings, junctions or insulated stand off bushing.

## 订货信息 Order Information

产品名称 Description	订货编号 Reference No.
630A 12kV绝缘帽 Insulating Protective Cap	EH JYM-12/630

## 产品构造 Product Structure

1. 操作环：由不锈钢制成，方便产品的安装与操作；
2. 绝缘层：特有配方和混合技术确保预制EPDM绝缘橡胶的优质品质；
3. 外半导体层：预制式的EPDM导电橡胶符合IEEE592标准；
4. 内螺纹：内部螺纹为M16-2；
5. 接地眼：通过接地眼，使产品接地。

- 1.The operating ring: made of stainless steel to facilitate the installation and operation of products;
- 2.The insulation layer: a unique formula and mixing technology to ensure that pre-EPDM insulation rubber quality;
- 3.The outer semiconducting layer: prefabricated EPDM conductive rubber in line with IEEE592 standard;
- 4.Internal thread: internal thread for the M16-2;
- 5.Grounded eye: ground through the eye, the product ground.

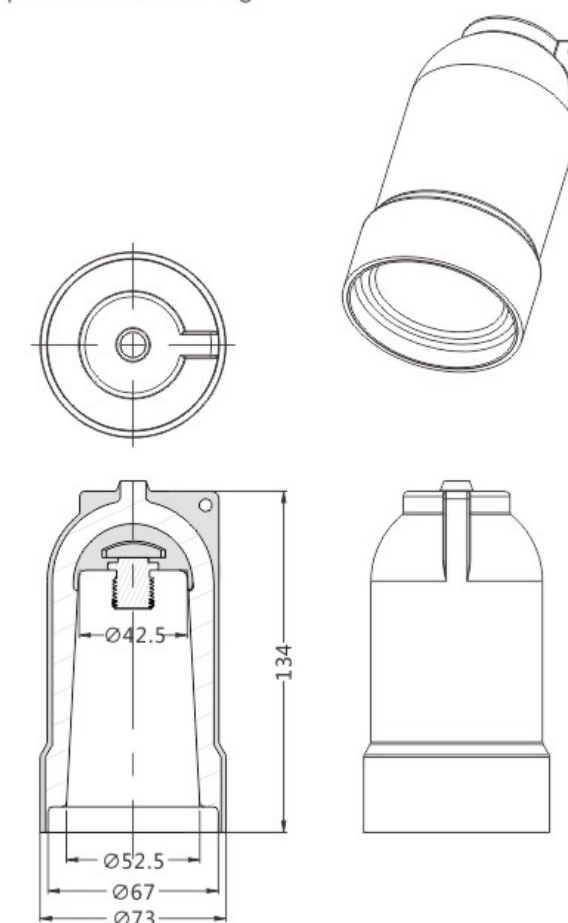
## 定货编号说明 Inference Information

EH	JYM	-	□	/	630	
						额定电流 Rated current
						额定电压 Rated voltage
						绝缘帽 Insulated protective cap
						益豪电气 Yihao Electric

## 标准包装 Scope of Delivery

- 绝缘帽
- 清洁纸
- 硅脂
- 安装指导说明书
- 产品合格证
- Insulated protective cap
- Clearing paper
- Silicone lubricant
- Installation instruction sheet
- Quality certificate

## 12kV 欧式绝缘帽结构图 12kV European Insulating Cap Structural Drawing



## 应用 Application

可分离连接器前插头（螺栓连接）用于将聚合绝缘材料电缆与设备连接（如：变压器、开关柜、分支箱、发电机组...）

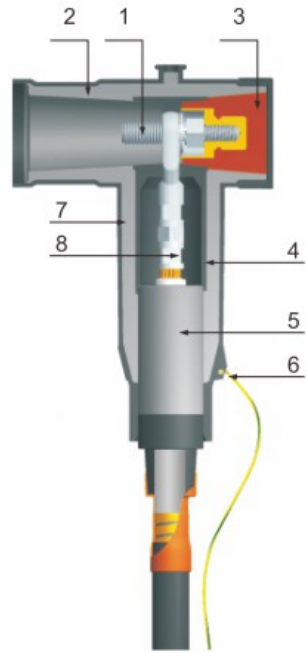
The front plug (bolted connection) of the detachable connector is used to connect the polymer insulated cable to the equipment (such as transformer, switchgear, branch box, generator set...)

## 技术特性 Technical characteristics

- 优异的内、外屏蔽设计，表面屏蔽电阻小于5000Ω，具有一定厚度的可导电屏蔽层完全保证操作人员接触时的安全；实现了设备的全绝缘、全屏蔽、全密封、可触摸，电气性能优越。
- 每个可分离插头出厂前都通过了交流耐压测试。
- 电缆特性
  - 聚合物绝缘（XLPE、ERP）
  - 铜、铝导体
  - 具有半导体或金属屏蔽
- Excellent internal and external shielding design, surface shielding resistance less than 5000 Ω, with a certain thickness of conductive shielding layer to fully ensure the safety of operators when contacting; The equipment is fully insulated, fully shielded, fully sealed, touchable and has excellent electrical performance.
- Each detachable plug-in head has passed the AC withstand voltage test before leaving the factory.
- Cable characteristics
  - Polymer insulation (XLPE, ERP)
  - Copper and aluminum conductors
  - With semi conducting or metal shielding



24kV/630A 欧式前接头  
24kV/630A European style front connector



图二：产品构造图  
Figure 2: Illustrate Design Integrity

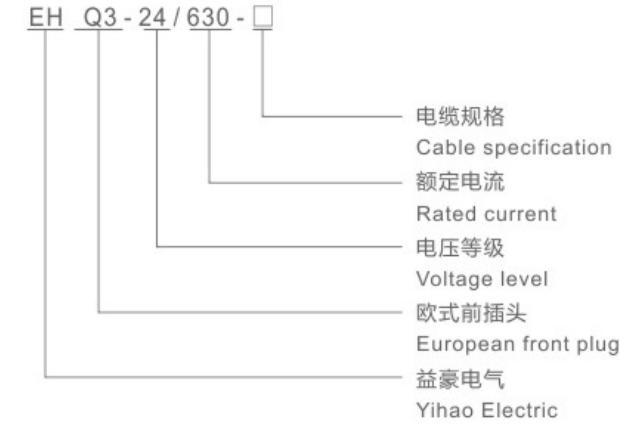
## 产品构造 Product Structure

1. 双头螺栓：不锈钢螺栓确保导体和套管紧密配合。
  2. 绝缘层：特有的配方和混合技术确保预制EPDM绝缘橡胶的优质品质。
  3. 绝缘子：环氧树脂绝缘子内含有带螺纹金属件可以确保与双头螺栓紧密配合。
  4. 内半导体层：预制的EPDM导电橡胶有效的控制电气应力。
  5. 应力锥：不同尺寸的应力锥配合电缆接头使用，能确保水密封以及电缆应力释放。
  6. 接地眼：预注到外屏蔽中用于接地线的连接。
  7. 外半导体层：预制的EPDM导电橡胶与电缆屏蔽层搭接使屏蔽连续，并确保外半导体层处于接地状态。
  8. 压接端子：全铜或铜铝压接端子适用于铜或铝导体。
- 1.TWO HEAD SCREW: To make sure have a good contact with the apparatusbushing.  
2.INSULATION: Moulded EPDM insulating rubber is formulated and mixed in-houseto ensure high quality.  
3.INSULATING PLUG: Moulded epoxy insulating plug provides excellent electrical,thermal and mechanical reliability.  
4.SEMI-CONDUCTIVE INSERT: Moulded EPDM conducting rubber screen controlselectrical stress.  
5.STRESS RELIEF: The configuration of the outer screen and the cable adapterprovide cable stress relief.  
6.GROUNDING EYE: Moulded into the external screen for connection of an earthingwire.  
7.SEMI-CONDUCTIVE SHIELD: Moulded EPDM conducting rubber mates withthe cable screen to maintain screen continuity and ensure that the assemblyis at earth potential.  
8.CONDUCTOR CABLE LUG:Aluminum compression connector is sized to ensurea cool running connector with maximum current transfer.

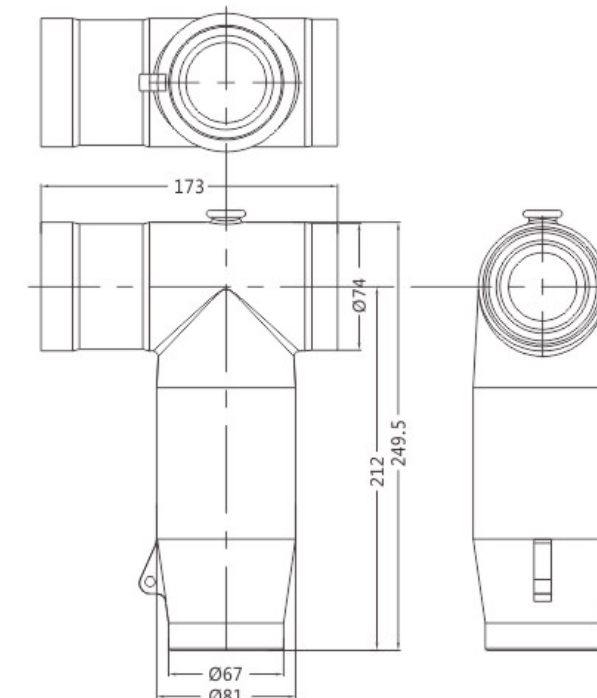
## 24kV电缆型号配置表 24kV Cable model configuration table

应力锥内孔直径规格 (mm) Diameter specification of inner hole of stress cone (mm)	电缆芯绝缘直径范围 Insulation diameter range of cable core		12/20(24) kV	18/30(36)kV
	最小值 (mm) Minimum (mm)	最大值 (mm) Maximum (mm)	电缆截面 (mm²) Cable section (mm²)	电缆截面 (mm²) Cable section (mm²)
Φ16	20	24	35-70	-
Φ20	24	28	95-150	35-70
Φ25	28	33	185-240	95-150
Φ30	33	38	300-400	185-240
Φ35	39	43	500	300-400
Φ40	44	50	-	500

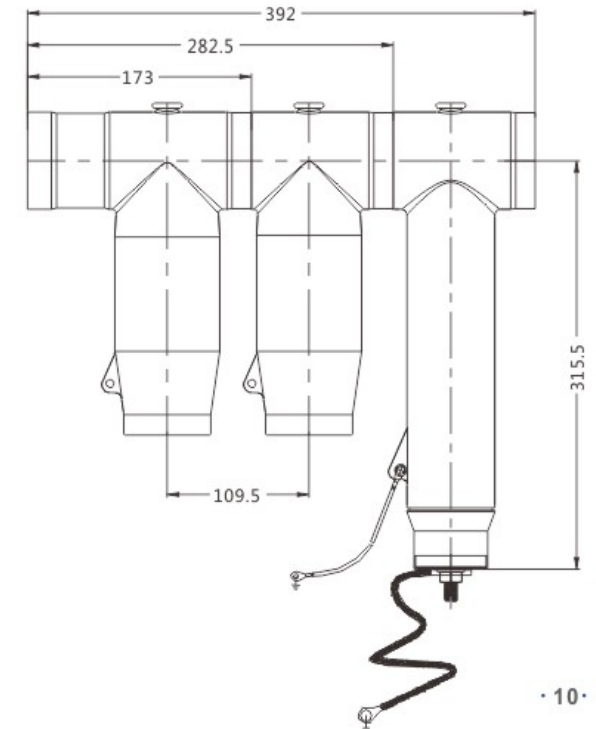
## 订货编号说明 Order number description



## 外形尺寸图 Dimensions



## 产品组合图 Product Portfolio Diagram



## 应用 Application

可分离连接器后插头（螺栓连接）用于将聚合绝缘材料电缆与设备连接，专为双拼电缆设计（后插扩展）；与可分离式插头共同使用。

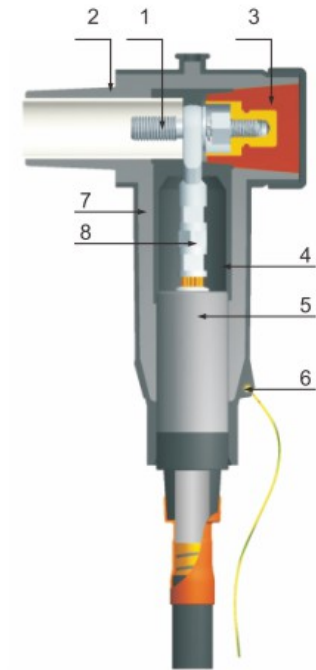
The rear plug (bolted connection) of the detachable connector is used to connect the polymer insulated cable with the equipment, which is specially designed for double splicing cable (rear plug expansion); Use with detachable plug.

## 技术特性 Technical characteristics

- 优异的内、外屏蔽设计，表面屏蔽电阻小于5000Ω，具有一定厚度的可导电屏蔽层完全保证操作人员接触时的安全；实现了设备的全绝缘、全屏蔽、全密封、可触摸，电气性能优越。
- 每个可分离插头出厂前都通过了交流耐压测试。
- 电缆特性
  - 聚合物绝缘（XLPE、ERP）
  - 铜、铝导体
  - 具有半导体或金属屏蔽
- Excellent internal and external shielding design, surface shielding resistance less than 5000 Ω, with a certain thickness of conductive shielding layer to fully ensure the safety of operators when contacting; The equipment is fully insulated, fully shielded, fully sealed, touchable and has excellent electrical performance.
- Each detachable plug-in head has passed the AC withstand voltage test before leaving the factory.
- Cable characteristics
  - Polymer insulation (XLPE, ERP)
  - Copper and aluminum conductors
  - With semi conducting or metal shielding

## 产品构造 Product Structure

1. 双头螺栓：不锈钢螺栓确保导体和套管紧密配合。
  2. 绝缘层：特有的配方和混合技术确保预制EPDM绝缘橡胶的优质品质。
  3. 绝缘子：环氧树脂绝缘子内含有带螺纹金属件可以确保与双头螺栓紧密配合。
  4. 内半导体层：预制的EPDM导电橡胶有效的控制电气应力。
  5. 应力锥：不同尺寸的应力锥配合电缆接头使用，能确保水密封以及电缆应力释放。
  6. 接地眼：预注到外屏蔽中用于接地线的连接。
  7. 外半导体层：预制的EPDM导电橡胶与电缆屏蔽层搭接使屏蔽连续，并确保外半导体层处于接地状态。
  8. 压接端子：全铜或铜铝压接端子适用于铜或铝导体。
- 1.TWO HEAD SCREW: To make sure have a good contact with the apparatusbushing.  
2.INSULATION: Moulded EPDM insulating rubber is formulated and mixed in-house to ensure high quality.  
3.INSULATING PLUG: Moulded epoxy insulating plug provides excellent electrical, thermal and mechanical reliability.  
4.SEMI-CONDUCTIVE INSERT: Moulded EPDM conducting rubber screen control electrical stress.  
5.STRESS RELIEF: The configuration of the outer screen and the cable adapter provide cable stress relief.  
6.GROUNDING EYE: Moulded into the external screen for connection of an earthing wire.  
7.SEMI-CONDUCTIVE SHIELD: Moulded EPDM conducting rubber mates with the cable screen to maintain screen continuity and ensure that the assembly is at earth potential.  
8.CONDUCTOR CABLE LUG: Aluminum compression connector is sized to ensure a cool running connector with maximum current transfer.

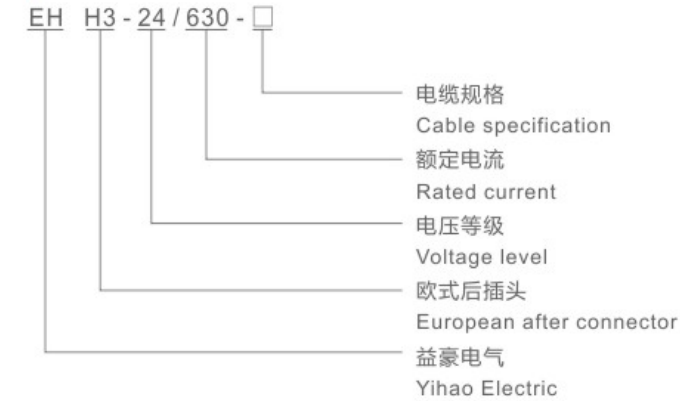


图二：产品构造图  
Figure 2: Illustrate Design Integrity

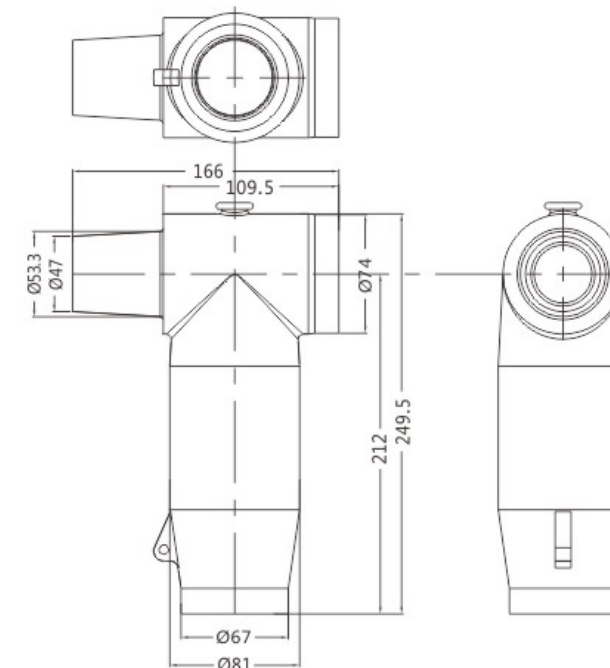
## 24kV电缆型号配置表 24kV Cable model configuration table

应力锥内孔直径规格 (mm) Diameter specification of inner hole of stress cone (mm)	电缆芯绝缘直径范围 Insulation diameter range of cable core		12/20(24) kV	18/30(36) kV
	最小值 (mm) Minimum (mm)	最大值 (mm) Maximum (mm)	电缆截面 (mm <sup>2</sup> ) Cable section (mm <sup>2</sup> )	电缆截面 (mm <sup>2</sup> ) Cable section (mm <sup>2</sup> )
Φ16	20	24	35-70	-
Φ20	24	28	95-150	35-70
Φ25	28	33	185-240	95-150
Φ30	33	38	300-400	185-240
Φ35	39	43	500	300-400
Φ40	44	50	-	500

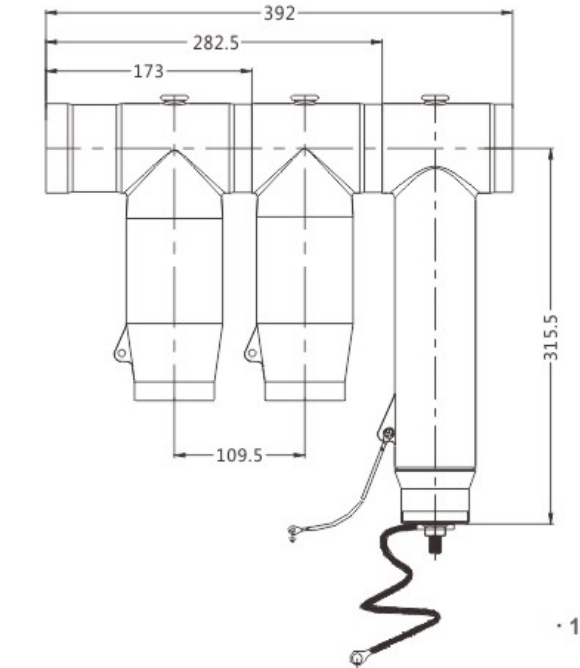
## 订货编号说明 Order number description



## 外形尺寸图 Dimensions



## 产品组合图 Product Portfolio Diagram





24kV 欧式后接避雷器  
24kV European rear lightning arrester

## 应用 Application

可分离连接器后插头（螺栓连接）用于将聚合绝缘材料电缆与设备连接，专为双拼电缆设计（后插扩展）；与可分离式插头共同使用。

The rear plug (bolted connection) of the detachable connector is used to connect the polymer insulated cable with the equipment, which is specially designed for double splicing cable (rear plug expansion); Use with detachable plug.

## 规范与标准 Codes and standards

IEC 60099  
GB/T 11032

## 技术特性 Technical characteristics

- 优异的内、外屏蔽设计，表面屏蔽电阻小于5000Ω，具有一定厚度的可导电屏蔽层完全保证操作人员接触时的安全；实现了设备的全绝缘、全屏蔽、全密封、可触摸，电气性能优越。
- 每个可分离插拔头出厂前都通过了交流耐压测试。
- 电缆特性
  - 聚合物绝缘（XLPE、ERP）
  - 铜、铝导体
  - 具有半导体或金属屏蔽
- Excellent internal and external shielding design, surface shielding resistance less than 5000 Ω, with a certain thickness of conductive shielding layer to fully ensure the safety of operators when contacting; The equipment is fully insulated, fully shielded, fully sealed, touchable and has excellent electrical performance.
- Each detachable plug-in head has passed the AC withstand voltage test before leaving the factory.
- Cable characteristics
  - Polymer insulation (XLPE, ERP)
  - Copper and aluminum conductors
  - With semi conducting or metal shielding

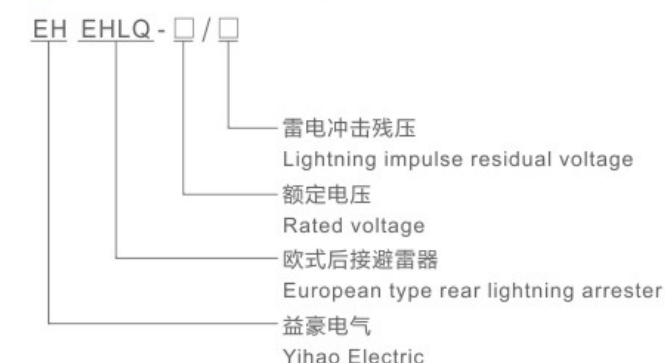
## 标准包装 Standard packaging

- |           |   |
|-----------|---|
| ● 避雷器本体   | ● Arrester body                                 |
| ● 双头螺栓    | ● Stud bolt                                     |
| ● 避雷器专用连杆 | ● Special connecting rod for lightning arrester |
| ● 安装膏     | ● Installation paste                            |
| ● 清洁纸     | ● Cleaning paper                                |
| ● 出厂测试报告  | ● Factory test report                           |
| ● 安装说明书   | ● Installation instructions                     |
| ● 产品合格证   | ● Product certificate                           |

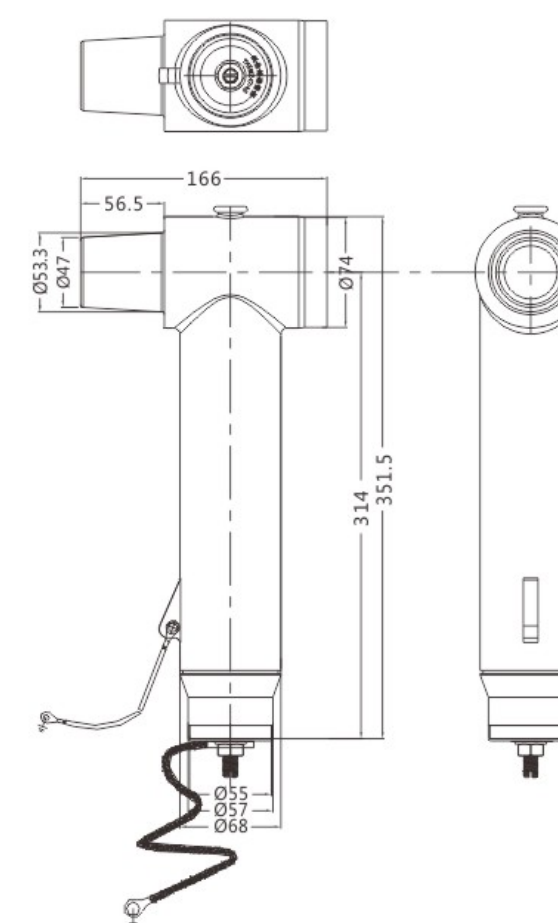
## 订货信息 Order Information

产品名称 Product name	订货编号 Order No.
26/66kV欧式后接避雷器 26/66kV European type rear lightning arrester	EH HBLQ-26/66
34/85kV欧式后接避雷器 34/85kV European type rear lightning arrester	EH HBLQ-34/85

## 订货编号说明 Order number description

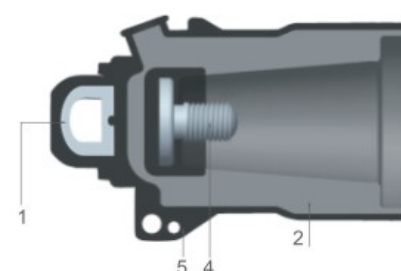


## 外形尺寸图 Dimensions





带接地线的标准绝缘帽  
Insulated Protective Cap



产品构造图  
Illustrate Design Integrity

## 概述 General

24kV 630A绝缘帽是带电套管的附属配件，为带电套管提供绝缘封套，对不带电的接头提供防尘、防潮封套。

630A绝缘帽可以安装在630A套管、母排及壁挂等设备上，当母排和电缆接头预留有备用出线时，必须用630A绝缘帽将其密封。

24kV 630A Insulated Protective Cap is an accessory device designed to electrically insulate and mechanically seal load break bushing interfaces. When mated to a load break product and the drain wire is attached to ground, the Insulated Protective Cap provides a fully shielded, submersible insulating cover for energized bushings. The Insulated Protective Cap can be used for permanent or temporary installation on 200A bushings, junctions or insulated stand off bushing.

## 订货信息 Order Information

产品名称 Description	订货编号 Reference No.
630A 24kV绝缘帽 Insulating Protective Cap	EH JYM-24/630

## 产品构造 Product Structure

1. 操作环：由不锈钢制成，方便产品的安装与操作；
2. 绝缘层：特有配方和混合技术确保预制EPDM绝缘橡胶的优质品质；
3. 外半导体层：预制式的EPDM导电橡胶符合IEEE592标准；
4. 内螺纹：内部螺纹为M16-2；
5. 接地眼：通过接地眼，使产品接地。

- 1.The operating ring: made of stainless steel to facilitate the installation and operation of products;
- 2.The insulation layer: a unique formula and mixing technology to ensure that pre-EPDM insulation rubber quality;
- 3.The outer semiconducting layer: prefabricated EPDM conductive rubber in line with IEEE592 standard;
- 4.Internal thread: internal thread for the M16-2;
- 5.Grounded eye: ground through the eye, the product ground.

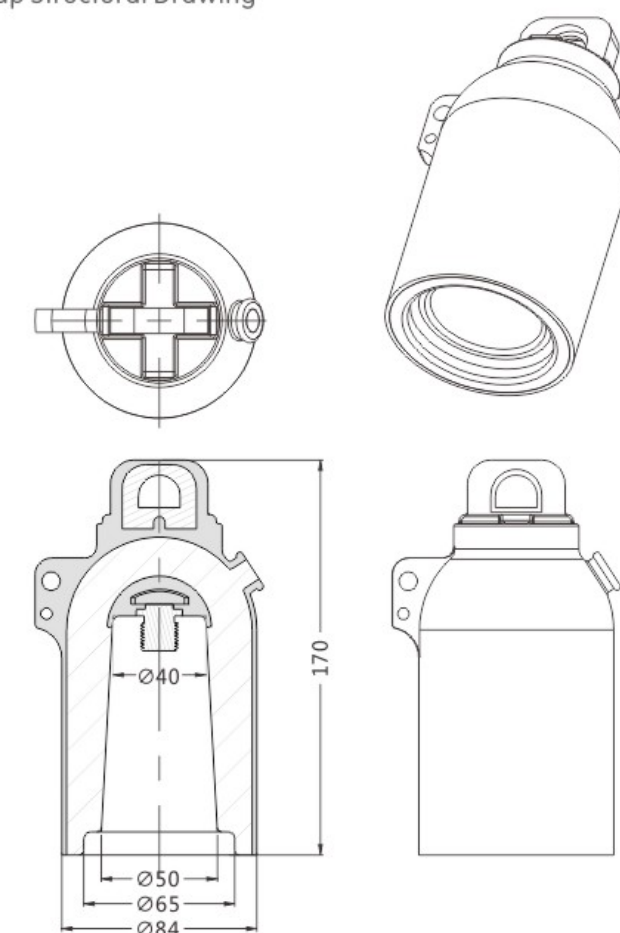
## 定货编号说明 Inference Information

EH	JYM	-	□	/	630	
						额定电流 Rated current
						额定电压 Rated voltage
						绝缘帽 Insulated protective cap
						益豪电气 Yihao Electric

## 标准包装 Scope of Delivery

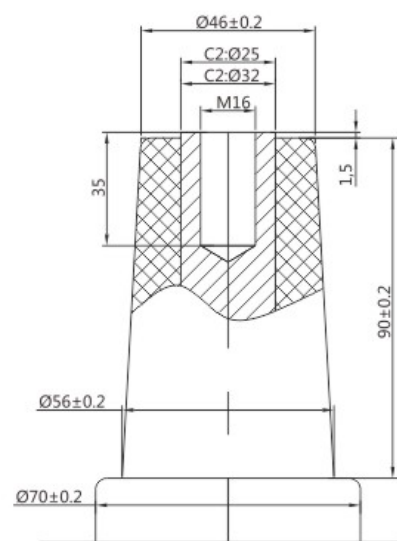
- 绝缘帽
- 清洁纸
- 硅脂
- 安装指导说明书
- 产品合格证
- Insulated protective cap
- Clearing paper
- Silicone lubricant
- Installation instruction sheet
- Quality certificate

## 24 欧式绝缘帽结构图 24 European Insulating Cap Structural Drawing





35kV/630A 欧式前接头  
35kV/630A European style front connector



套管接口: C型  
Casing interface: C Type

## 应用 Application

可分离连接器前插头（螺栓连接）用于将聚合绝缘材料电缆与设备连接（如：变压器、开关柜、分支箱、发电机组...）。  
也可通过相应配件将电缆与电缆连接。

The front plug (bolted connection) of the detachable connector is used to connect the polymer insulated cable to the equipment (such as transformer, switchgear, branch box, generator set...).  
Cables can also be connected to cables through corresponding accessories.

## 规范与标准 Codes and standards

IEC 60502.4  
GB/T 12706.4  
GB/T 11022

## 技术特性 Technical characteristics

- 优异的内、外屏蔽设计，表面屏蔽电阻小于5000Ω，具有一定厚度的可导电屏蔽层完全保证操作人员接触时的安全；实现了设备的全绝缘、全屏蔽、全密封、可触摸，电气性能优越。
- 每个可分离插头出厂前都通过了交流耐压测试。

### 电缆特性

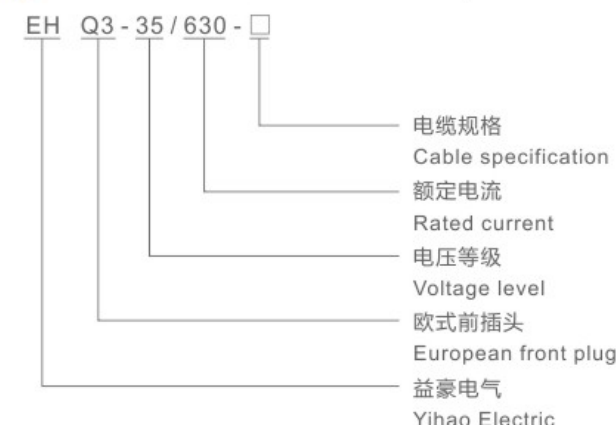
- 聚合物绝缘（XLPE、ERP）
- 铜、铝导体
- 具有半导体或金属屏蔽

- Excellent internal and external shielding design, surface shielding resistance less than 5000 Ω, with a certain thickness of conductive shielding layer to fully ensure the safety of operators when contacting; The equipment is fully insulated, fully shielded, fully sealed, touchable and has excellent electrical performance.
- Each detachable plug-in head has passed the AC withstand voltage test before leaving the factory.
- Cable characteristics
  - Polymer insulation (XLPE, ERP)
  - Copper and aluminum conductors
  - With semi conducting or metal shielding

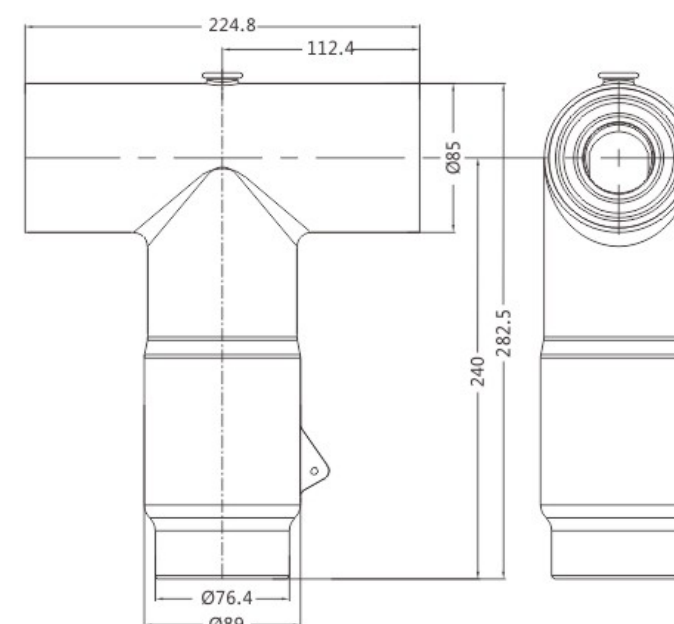
## 35kV电缆型号配置表 35kV Cable model configuration table

应力锥内孔直径规格 (mm) Diameter specification of inner hole of stress cone (mm)	电缆芯绝缘直径范围 Insulation diameter range of cable core		26/35(40.5) kV
	最小值 (mm) Minimum (mm)	最大值 (mm) Maximum (mm)	电缆截面 (mm <sup>2</sup> ) Cable section (mm <sup>2</sup> )
Φ23	25	29.5	35-50
Φ26	30	35	70-95
Φ30	35	38	150-185
Φ34	38	42	240-300
Φ38	44	48	400-500

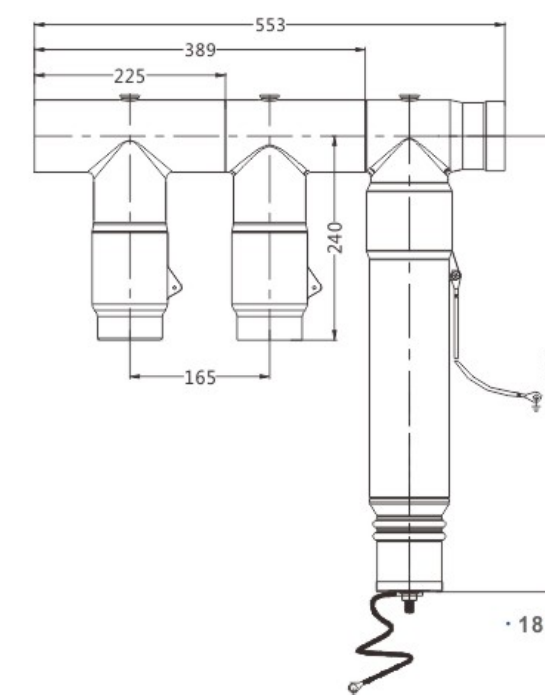
## 订货编号说明 Order number description



## 外形尺寸图 Dimensions

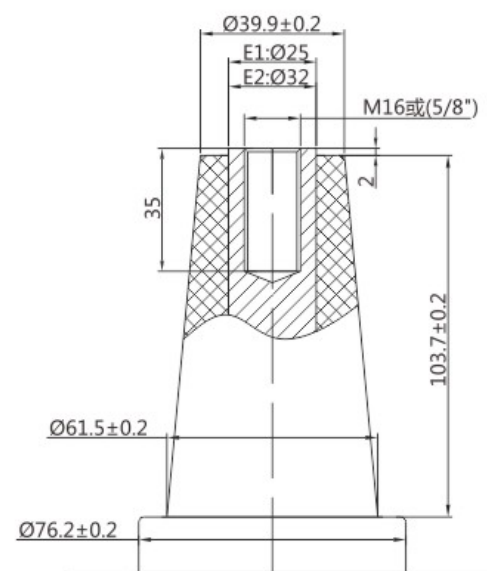


## 产品组合图 Product Portfolio Diagram





35kV/630A 美式前接头  
35kV/630A American front connector



套管接口：E型  
Casing interface: E Type

## 应用 Application

可分离连接器前插头（螺栓连接）用于将聚合绝缘材料电缆与设备连接（如：变压器、开关柜、分支箱、发电机组...）。  
也可通过相应配件将电缆与电缆连接。

The front plug (bolted connection) of the detachable connector is used to connect the polymer insulated cable to the equipment (such as transformer, switchgear, branch box, generator set...).  
Cables can also be connected to cables through corresponding accessories.

## 规范与标准 Codes and standards

IEC 60502.4

GB/T 12706.4

GB/T 11022

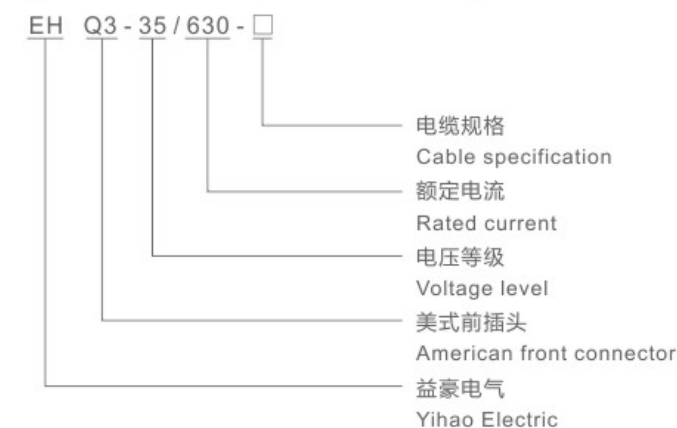
## 技术特性 Technical characteristics

- 优异的内、外屏蔽设计，表面屏蔽电阻小于5000Ω，具有一定厚度的可导电屏蔽层完全保证操作人员接触时的安全；实现了设备的全绝缘、全屏蔽、全密封、可触摸，电气性能优越。
- 每个可分离插拔头出厂前都通过了交流耐压测试。
- 电缆特性
  - 聚合物绝缘（XLPE、ERP）
  - 铜、铝导体
  - 具有半导体或金属屏蔽
- Excellent internal and external shielding design, surface shielding resistance less than 5000 Ω, with a certain thickness of conductive shielding layer to fully ensure the safety of operators when contacting; The equipment is fully insulated, fully shielded, fully sealed, touchable and has excellent electrical performance.
- Each detachable plug-in head has passed the AC withstand voltage test before leaving the factory.
- Cable characteristics
  - Polymer insulation (XLPE, ERP)
  - Copper and aluminum conductors
  - With semi conducting or metal shielding

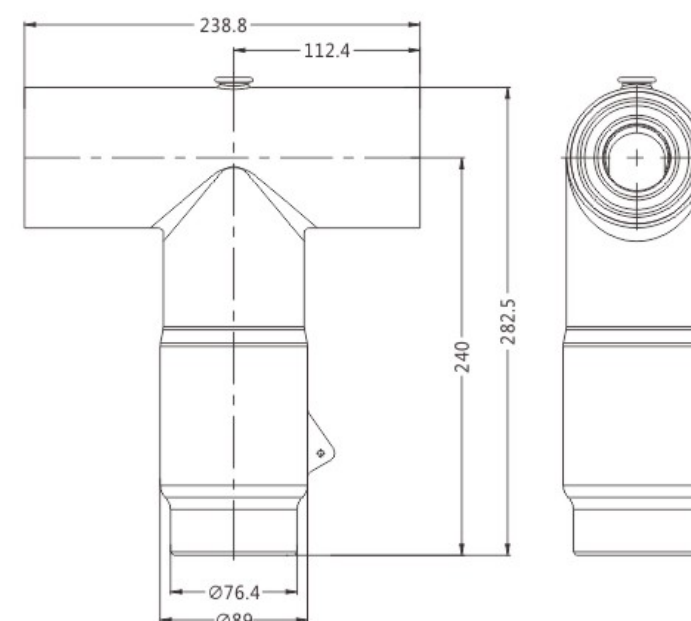
## 35kV电缆型号配置表 35kV Cable model configuration table

应力锥内孔直径规格 (mm) Diameter specification of inner hole of stress cone (mm)	电缆芯绝缘直径范围 Insulation diameter range of cable core		26/35(40.5) kV
	最小值 (mm) Minimum (mm)	最大值 (mm) Maximum (mm)	电缆截面 (mm²) Cable section (mm²)
Φ23	25	29.5	35-50
Φ26	30	35	70-95
Φ30	35	38	150-185
Φ34	38	42	240-300
Φ38	44	48	400-500

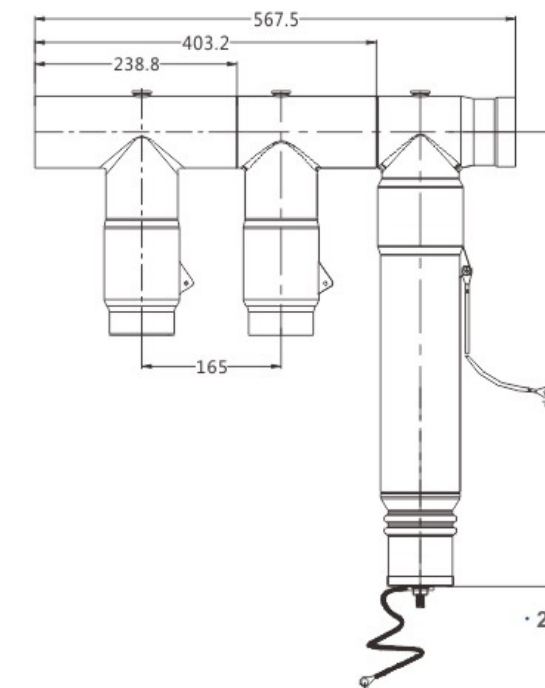
## 订货编号说明 Order number description



## 外形尺寸图 Dimensions



## 产品组合图 Product Portfolio Diagram





35kV/630A 欧式后接头  
35kV/630A European rear connector

## 应用 Application

可分离连接器后插头（螺栓连接）用于将聚合绝缘材料电缆与设备连接，专为双拼电缆设计（后插扩展）；与可分离式插头共同使用。

The rear plug (bolted connection) of the detachable connector is used to connect the polymer insulated cable with the equipment, which is specially designed for double splicing cable (rear plug expansion); Use with detachable plug.

## 规范与标准 Codes and standards

IEC 60502.4

GB/T 12706.4

GB/T 11022

## 技术特性 Technical characteristics

- 优异的内、外屏蔽设计，表面屏蔽电阻小于5000Ω，具有一定厚度的可导电屏蔽层完全保证操作人员接触时的安全；实现了设备的全绝缘、全屏蔽、全密封、可触摸，电气性能优越。
- 每个可分离插拔头出厂前都通过了交流耐压测试。

电缆特性

-聚合物绝缘（XLPE、ERP）

-铜、铝导体

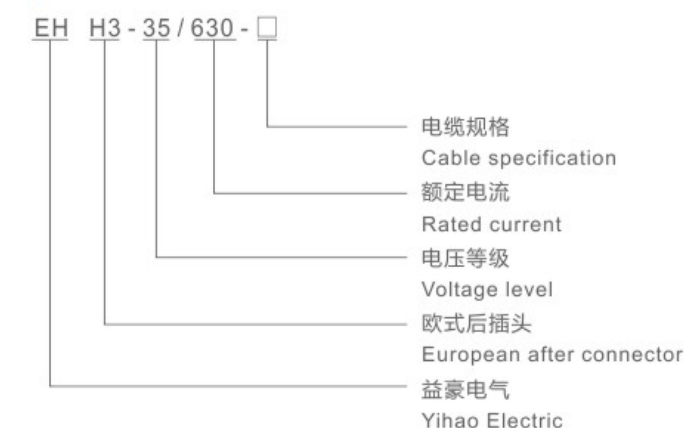
-具有半导体或金属屏蔽

- Excellent internal and external shielding design, surface shielding resistance less than 5000 Ω, with a certain thickness of conductive shielding layer to fully ensure the safety of operators when contacting; The equipment is fully insulated, fully shielded, fully sealed, touchable and has excellent electrical performance.
- Each detachable plug-in head has passed the AC withstand voltage test before leaving the factory.
- Cable characteristics
  - Polymer insulation (XLPE, ERP)
  - Copper and aluminum conductors
  - With semi conducting or metal shielding

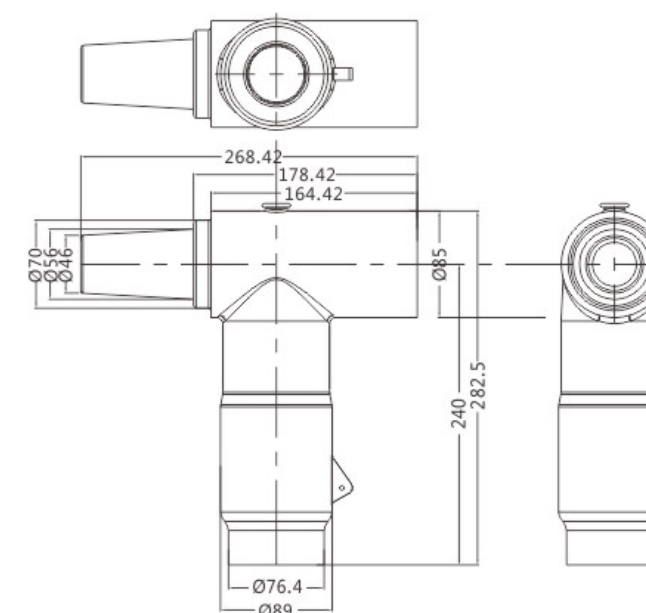
## 35kV电缆型号配置表 35kV Cable model configuration table

应力锥内孔直径规格 (mm) Diameter specification of inner hole of stress cone (mm)	电缆芯绝缘直径范围 Insulation diameter range of cable core		26/35(40.5) kV
	最小值 (mm) Minimum (mm)	最大值 (mm) Maximum (mm)	电缆截面 (mm <sup>2</sup> ) Cable section (mm <sup>2</sup> )
Φ23	25	29.5	35-50
Φ26	30	35	70-95
Φ30	35	38	150-185
Φ34	38	42	240-300
Φ38	44	48	400-500

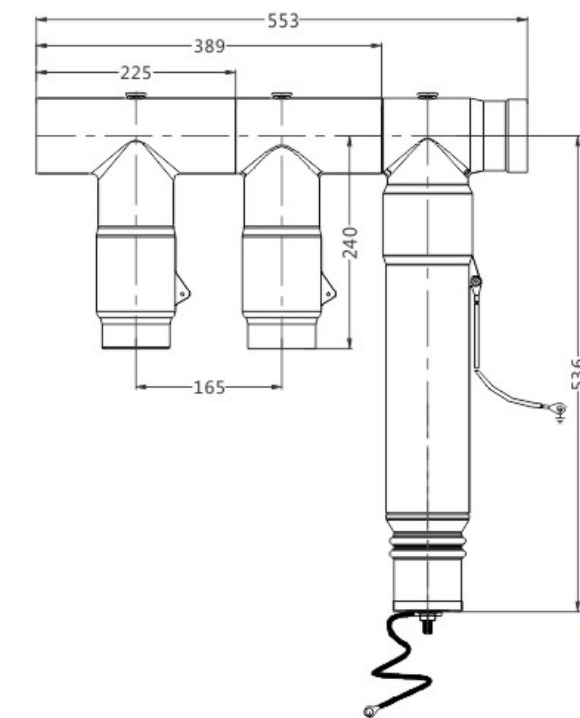
## 订货编号说明 Order number description



## 外形尺寸图 Dimensions

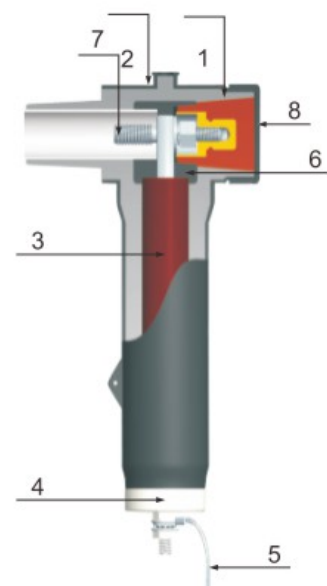


## 产品组合图 Product Portfolio Diagram





EH HBLQ-35kV 欧式后接避雷器  
EH HBLQ-35kV  
European-style followed by arrester



产品构造图  
Illustrate Design Integrity

## 应用 Application

可分离连接器后插头（螺栓连接）用于将聚合绝缘材料电缆与设备连接，专为双拼电缆设计（后插扩展）；与可分离式插头共同使用。

The rear plug (bolted connection) of the detachable connector is used to connect the polymer insulated cable with the equipment, which is specially designed for double splicing cable (rear plug expansion); Use with detachable plug.

## 规范与标准 Codes and standards

IEC 60099  
GB/T 11032

## 技术特性 Technical characteristics

- 优异的内、外屏蔽设计，表面屏蔽电阻小于5000Ω，具有一定厚度的可导电屏蔽层完全保证操作人员接触时的安全；实现了设备的全绝缘、全屏蔽、全密封、可触摸，电气性能优越。
- 每个可分离插头出厂前都通过了交流耐压测试。
- 电缆特性
  - 聚合物绝缘（XLPE、ERP）
  - 铜、铝导体
  - 具有半导体或金属屏蔽
- Excellent internal and external shielding design, surface shielding resistance less than 5000 Ω, with a certain thickness of conductive shielding layer to fully ensure the safety of operators when contacting; The equipment is fully insulated, fully shielded, fully sealed, touchable and has excellent electrical performance.
- Each detachable plug-in head has passed the AC withstand voltage test before leaving the factory.
- Cable characteristics
  - Polymer insulation (XLPE, ERP)
  - Copper and aluminum conductors
  - With semi conducting or metal shielding

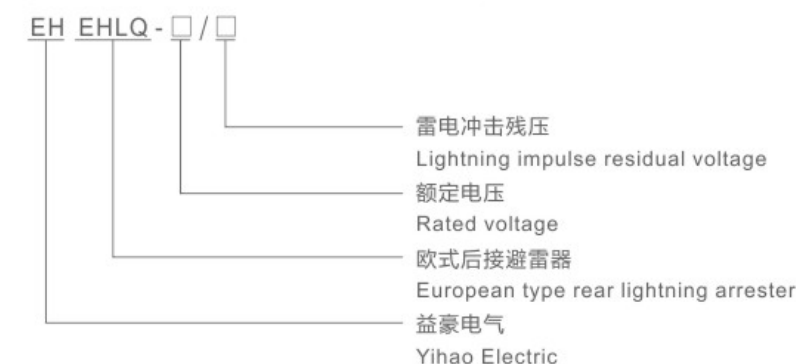
## 产品构造 Product Structure

- 1、绝缘层：特有的配方和混合技术确保预制EPDM绝缘橡胶的优质品质；
  - 2、外半导体层：预制的EPDM导电橡胶符合IEEE592标准；
  - 3、避雷器芯子：由经过特殊工艺处理的氧化锌避雷器阀片组成；
  - 4、铜质底盖：铜质底盖与避雷器外导电层紧密结合，使避雷器有效防水，并为避雷器提供接地点；
  - 5、接地线：避雷器下端自带的接地线，用于将雷电冲击电压有效牵引到接地位置。
- 1、EPDM INSULATION: High quality sulfur cured EPDM insulation is mixed and formulated in-house for complete control of insulating rubber characteristics.
  - 2、SEMI-CONDUCTIVE SHIELD: Molded semi-conductive EPDM shield meets requirements of ANSI/IEEE Standard 592.
  - 3、ARRESTER CORE: Compose of the zinc oxide lightning arrester valve slice which through special process treatment.
  - 4、PROBE: Probe provides reliable conductive path with mating female contacts.
  - 5、GROUNDING WIRE: (Optional for larger grounding wire) Used for impulse voltage effective after leads to grounding position.

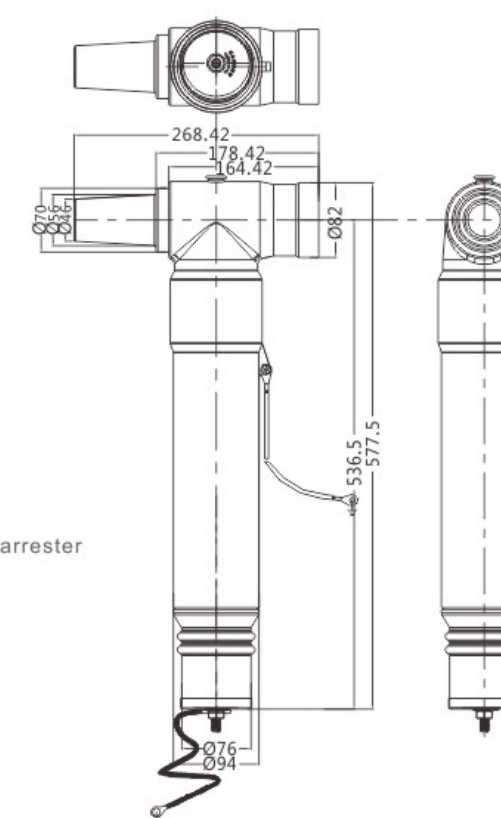
## 订货信息 Order Information

产品名称 Product name	订货编号 Order No.
YH5WZ-51/134/400	EH HBLQ-51/134/400
YH5WZ-51/134/600	EH HBLQ-51/134/600
YH5WZ-51/134/800	EH HBLQ-51/134/800

## 订货编号说明 Order number description



## 外形尺寸图 Dimensions



## 标准包装 Standard packaging

- 避雷器本体
- 双头螺栓
- 避雷器专用连杆
- 安装膏
- 清洁纸
- 出厂测试报告
- 安装说明书
- 产品合格证
- Arrester body
- Stud bolt
- Special connecting rod for lightning arrester
- Installation paste
- Cleaning paper
- Factory test report
- Installation instructions
- Product certificate

## 35kV避雷器主要参数 Main parameters of 35kV arrester

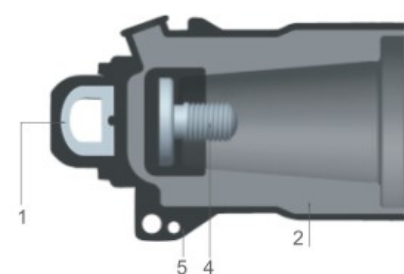
型号 Model	名称 Name	订货编号 Order No.
系统标称电压(kV) Nominal system voltage (kV)		35
额定电压(kV) Rated voltage (kV)		51
持续运行电压(kV) Continuous operating voltage (kV)		40.8
雷电冲击电流下残压(kV) Residual voltage under lightning impulse current (kV)		≤134
直流1mA下电压U <sub>1mA</sub> ≥(kV) Voltage U <sub>1mA</sub> ≥ (kV) under DC 1mA		73
0.75U <sub>1mA</sub> 下泄漏电流≤(μA) Leakage current at 0.75u <sub>1ma</sub> ≤(μA)		50
2ms方波冲击容量(A) 2ms square wave impact capacity (a)		400

## EHJYM-35kV/630A 欧式、美式绝缘帽

EHJYM-35kV/630A European style, American style insulating cap



带接地线的标准绝缘帽  
Insulated Protective Cap



产品构造图  
Illustrate Design Integrity

### 概述 General

35kV 630A绝缘帽是带电套管的附属配件，为带电套管提供绝缘封套，对不带电的接头提供防尘、防潮封套。

630A绝缘帽可以安装在630A套管、母排及壁挂等设备上，当母排和电缆接头预留有备用出线时，必须用630A绝缘帽将其密封。

35kV 630A Insulated Protective Cap is an accessory device designed to electrically insulate and mechanically seal load break bushing interfaces. When mated to a load break product and the drain wire is attached to ground, the Insulated Protective Cap provides a fully shielded, submersible insulating cover for energized bushings. The Insulated Protective Cap can be used for permanent or temporary installation on 200A bushings, junctions or insulated stand off bushing.

### 订货信息 Order Information

产品名称 Description	订货编号 Reference No.
630A 35kV绝缘帽 Insulating Protective Cap	EH JYM-35/630

### 产品构造 Product Structure

1. 操作环：由不锈钢制成，方便产品的安装与操作；
2. 绝缘层：特有配方和混合技术确保预制EPDM绝缘橡胶的优质品质；
3. 外半导体层：预制式的EPDM导电橡胶符合IEEE592标准；
4. 内螺纹：内部螺纹为M16-2；
5. 接地眼：通过接地眼，使产品接地。

- 1.The operating ring: made of stainless steel to facilitate the installation and operation of products;
- 2.The insulation layer: a unique formula and mixing technology to ensure that pre-EPDM insulation rubber quality;
- 3.The outer semiconducting layer: prefabricated EPDM conductive rubber in line with IEEE592 standard;
- 4.Internal thread: internal thread for the M16-2;
- 5.Grounded eye: ground through the eye, the product ground.

### 定货编号说明 Inference Information

EH	JYM	- □ / 630	
			额定电流 Rated current
			额定电压 Rated voltage
			绝缘帽 Insulated protective cap
			益豪电气 Yihao Electric

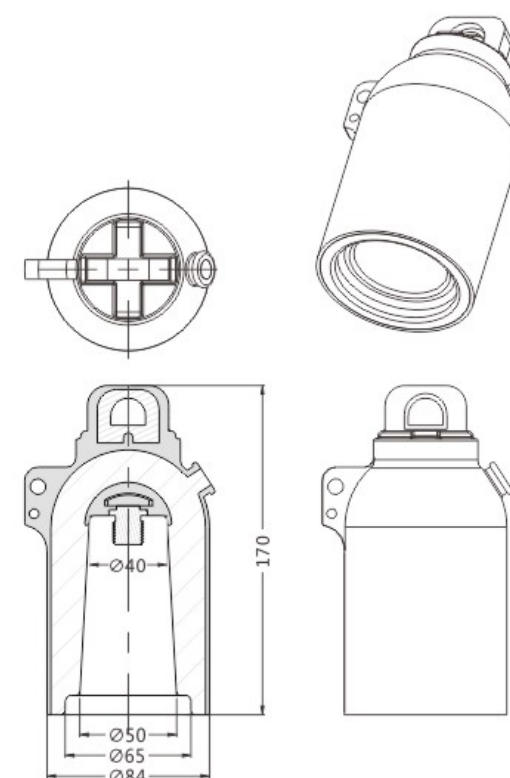
## EHJYM-35kV/630A 欧式、美式绝缘帽

EHJYM-35kV/630A European style, American style insulating cap

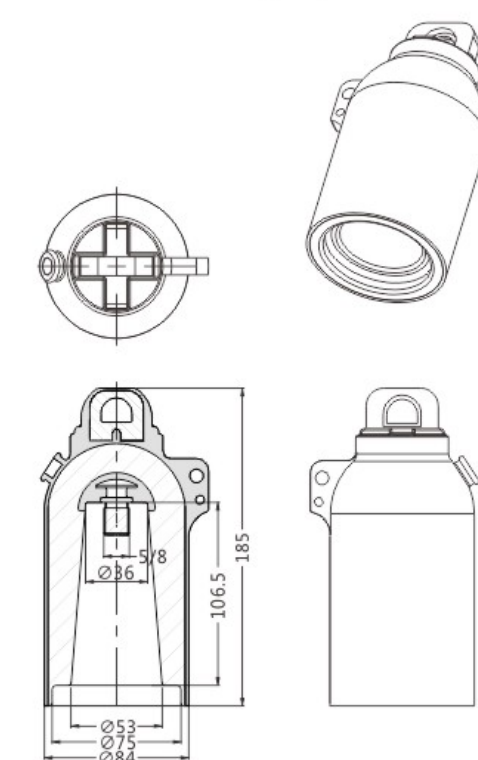
### 标准包装 Scope of Delivery

- 绝缘帽
- 清洁纸
- 硅脂
- 安装指导说明书
- 产品合格证
- Insulated protective cap
- Clearing paper
- Silicone lubricant
- Installation instruction sheet
- Quality certificate

### 35kV 欧式绝缘帽结构图 35kV European Insulating Cap Structural Drawing



### 35kV 美式绝缘帽结构图 35kV American Insulating Cap Structural Drawing



## EHCK-12kV/630A 侧扩母联器

EHCK-12kV/630A side bus coupler

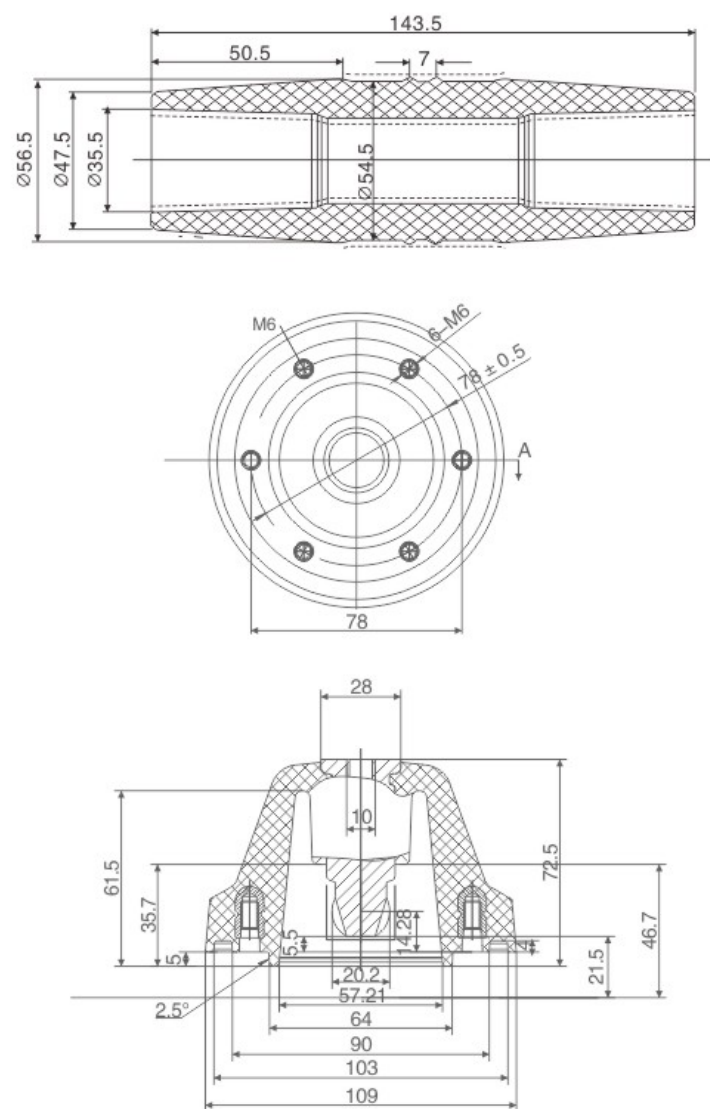
### 概述 General

采用高品质的EPDM橡胶材料预制成型，防水防尘，寿命长，保护性能强。

标准型母联器为“12千伏环网柜(箱)标准化设计定制方案(2019版)侧并柜母线扩展系统的一次母线连接，在柜体外实现全绝缘、全密封、全屏蔽连接。安装在电力开关设备侧面或其它特殊用位置。

High quality EPDM rubber material is used to preform, waterproof and dustproof, with long life and strong protection. The standard type busbar coupler is the primary busbar connection of the busbar extension system of the side side of the "12 kilovolt ring network cabinet (box) standardized design and customization scheme (2019 version), which realizes full insulation, full sealing and full shielding connection outside the cabinet body. Installed on the side of power switch equipment or in other special position.

### 外形及尺寸安装 Shape and size installation



## 屏蔽型3T电缆软连接

Shielded 3T cable soft connection

### 概述 General

屏蔽型3T电缆软连接主要用于充气柜、固体柜等。一端为屏蔽型前(后)630A欧式电缆头、另一端为美式PT肘型头加以全屏蔽软连接制作而成，电缆后端可加装避雷器来实现对PT柜的防雷保护作用，加以接地从而实现进线PT柜的优化方案。

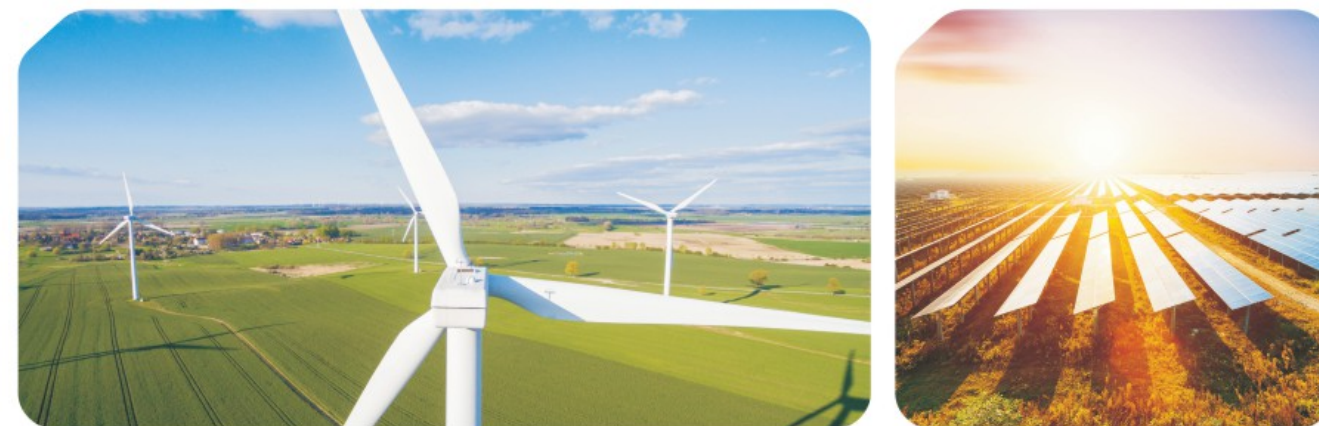
用于电动操动机构提供电源或计量保护用的互感器高压侧全绝缘、全屏蔽、全密封连接适合用于电缆截面35~120mm<sup>2</sup>。产品插拔简单，有可靠的防松脱装置。

Shielded 3T cable soft connection is mainly used for inflatable cabinets, solid cabinets and so on. One end is shielded front (rear) 630A European type cable head, the other end is made of fully shielded soft connection of American PT elbow type. The rear end of the cable can be equipped with lightning arrester to realize lightning protection of PT cabinet, and ground to realize the optimization scheme of incoming PT cabinet. The high voltage side of the transformer used for electric operating mechanism to provide power supply or measurement protection is fully insulated, fully shielded and fully sealed connection, suitable for cable section 35~120mm<sup>2</sup>. Product plug and pull simple, reliable anti-release device.

### 设计特点 Design features

采用矿用EPDM绝缘电缆，柔软度高，绝缘性可靠，此产品可任意弯曲，长度可定制。表面为屏蔽结构安装位置无限制，中心距大于400mm均可实现，从而达到最佳方案。

Mine EPDM insulated cable, high softness, reliable insulation, this product can be bent arbitrarily, length can be customized. The surface is shielded structure installation location unlimited, center distance greater than 400mm can be realized, so as to achieve the best solution.





丁字接头  
T-joint



十字接头  
Cross joint



### 概述 General

母线与630A十字接头、丁字接头组合，安装在开关的插座上。可实现多台负荷开关的串接，是组合型环网柜的优选方案。

欧式十字接头、丁字接头配母线长度可根据客户要求任意定制。适用于ABB，西门子，德理施尔品牌；环网柜开关的顶部或底部全绝缘、全密封连接，有屏蔽与非屏蔽两种。与负荷开关标准插座匹配，也用于带开关分支箱中。

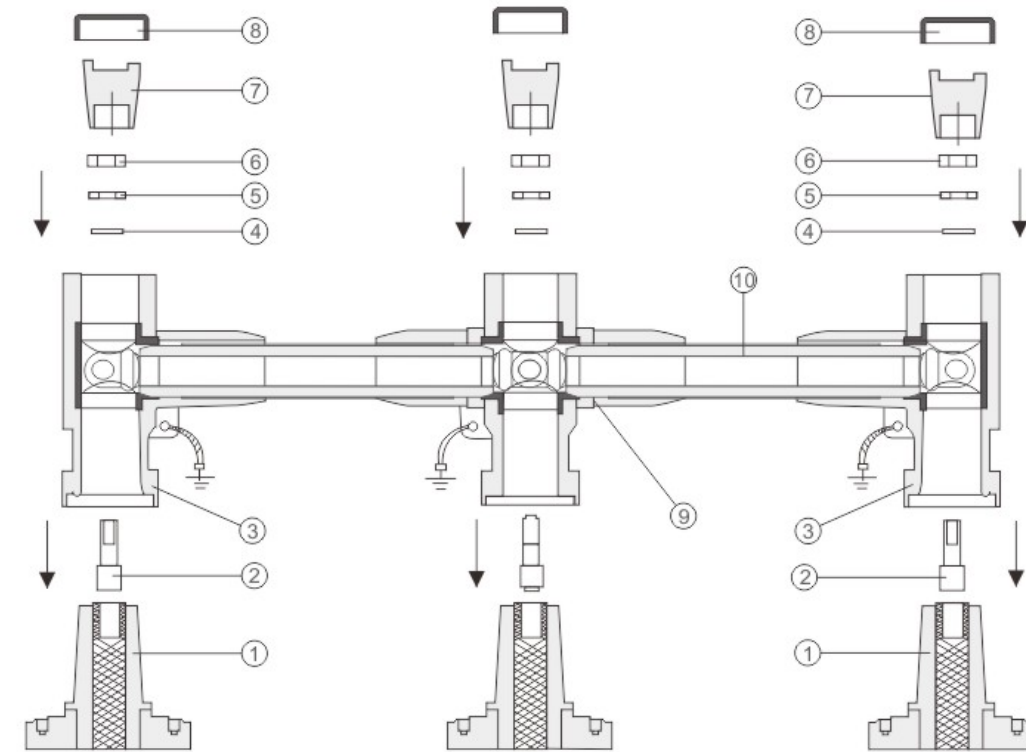
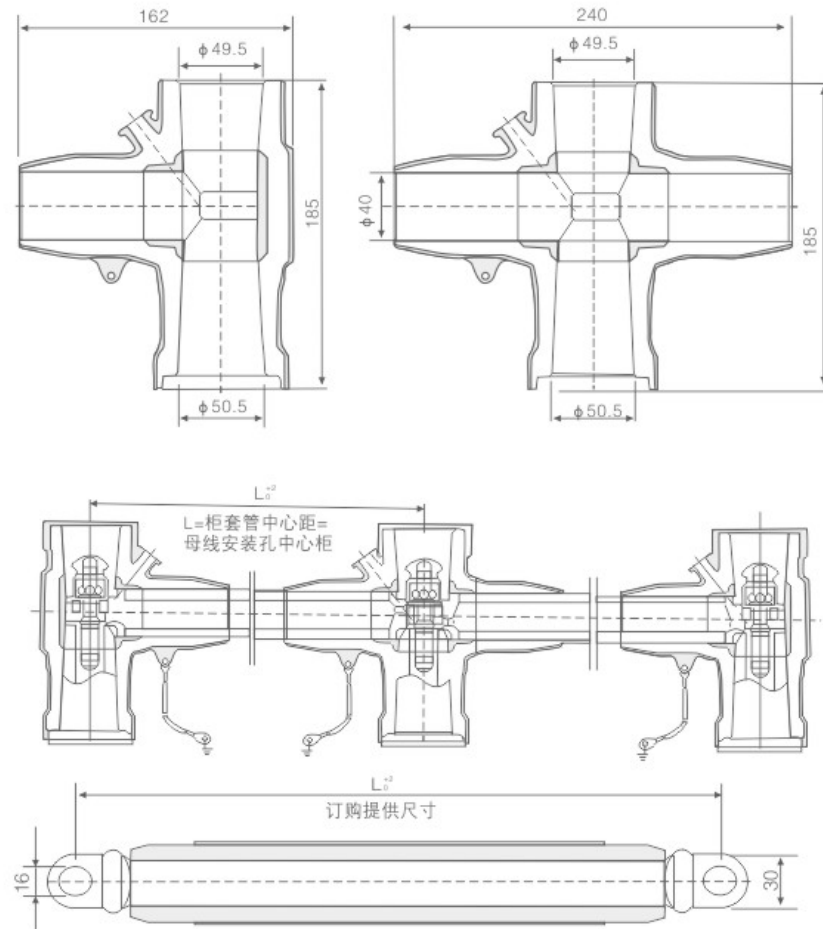
对负荷开关实现了全密封、全绝缘连接。完全避免了高压裸露在恶劣天气所带来的致命缺陷。用十字接头、丁字接头母线系统组合成的环网柜造价低、可靠性高。

The busbar is combined with 630A cross connector and T-connector and installed on the socket of the switch. It can realize the serial connection of multiple load switches and is the preferred scheme of combined ring network cabinet.

The length of European cross joint and T-joint with busbar can be customized according to customer requirements. Applicable to ABB, Siemens, and Dreschner brands; The top or bottom of the ring network cabinet switch is fully insulated and sealed, and there are two types of shielding and non shielding. It is matched with the standard socket of load switch and also used in the branch box with switch.

The load switch is fully sealed and insulated. It completely avoids the fatal defect caused by high-pressure exposure in bad weather. The ring network cabinet composed of cross joint and T-joint busbar system has low cost and high reliability.

### 外形及尺寸安装 Shape and size installation

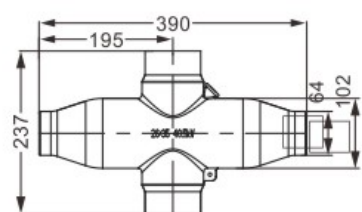


- 1、630A设备套管
- 2、双通变径螺杆
- 3、丁字接头
- 4、平垫
- 5、M12弹垫
- 6、M12螺母
- 7、绝缘塞
- 8、屏蔽罩
- 9、十字头
- 10、屏蔽母线

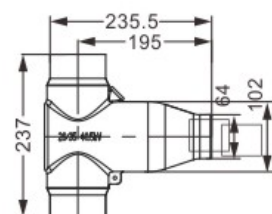
1. 630A equipment casing
2. Double pass reducing screw
3. T-joint
4. Flat pad
5. M12 spring washer
6. M12 nut
7. Insulating plug
8. Shield cover
9. Crosshead
10. Shielded bus

说明：若接头与母线之间的相交部位出厂前没有缠绕半导电胶带，请用半导电自粘带半搭接方式将接头与母线屏蔽表面相交周围缠绕3~4层。

Note: If the intersection between the connector and the bus is not wrapped with semi conductive tape before leaving the factory, please wrap 3~4 layers of semi conductive self-adhesive tape around the intersection between the connector and the bus shielding surface in a semi overlapping manner.



十字型连接器  
Cross connector



丁字型连接器  
T-connector



屏蔽型母线-同向  
Shielded busbar - same direction



屏蔽型母线-异向  
Shielded busbar - opposite direction

## 概述 General

35kV C型顶扩屏蔽母线连接器，用于SF6气体绝缘开关柜之间的母线连接，适配EN 50180和EN 50181 标准中的C型套管接口，最大额定电流1250A。

母线连接器由母线、丁字接头、十字接头组合，母线采用端子结构，母线中心距可根据客户的要求定制，安装便捷；适用于26/35(40.5)kV额定电流：630A及1250A的电力系统。

35kV C-type top expansion shielded bus connector is used for bus connection between SF6 gas insulated switchgear cabinets, which is suitable for C-type bushing interface in EN 50180 and EN 50181 standards, with the maximum rated current of 1250A.

The bus connector is composed of bus, T-joint and cross joint. The bus adopts terminal structure. The bus center distance can be customized according to customer requirements, and the installation is convenient; It is applicable to 26/35 (40.5) kV power system with rated current of 630A and 1250A.

## 规范与标准 Codes and standards

IEC 60502.4

GB/T 12706.4

GB/T 11022

## 技术特性 Technical characteristics

- 优异的内、外屏蔽设计，表面屏蔽电阻小于5000Ω，具有一定厚度的可导电屏蔽层完全保证操作人员接触时的安全；实现了设备的全绝缘、全屏蔽、全密封、可触摸，电气性能优越。
- 每组母线连接器出厂前都通过了交流耐压、局部放电测试。
- Excellent internal and external shielding design, the surface shielding resistance is less than 5000 Ω, and the conductive shielding layer with a certain thickness can fully ensure the safety of operators when contacting; The equipment is fully insulated, shielded, sealed, touchable and has superior electrical performance.
- Each group of bus connectors has passed AC withstand voltage and partial discharge tests before delivery.



屏蔽型母线（同向）  
Shielded bus (in the same direction)



十字连接器  
Cross connector

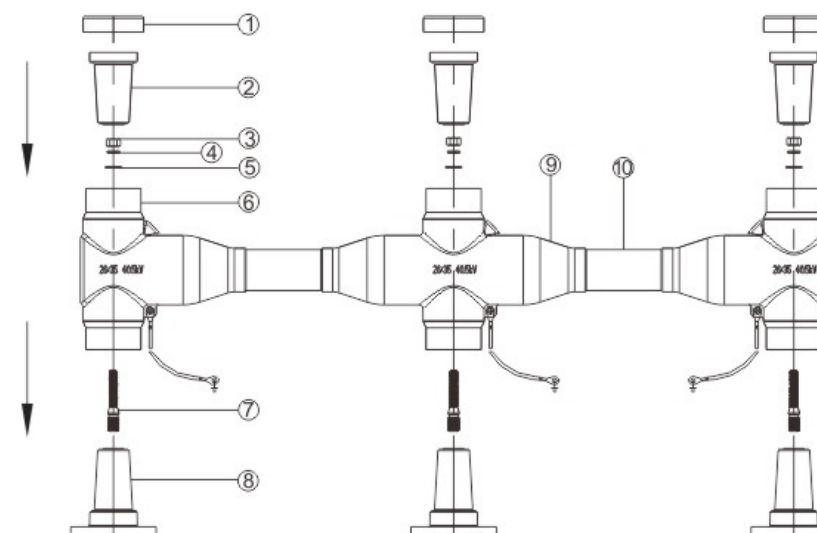


屏蔽型母线（异向）  
Shielded bus (opposite direction)



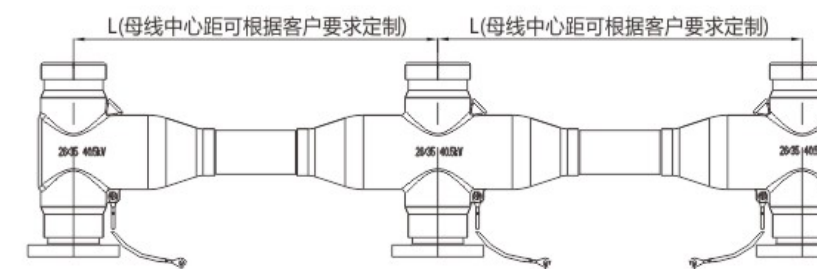
丁字连接器  
T-connector

## 产品结构 Product Mix



- |          |           |                    |                     |
|----------|-----------|--------------------|---------------------|
| 1. 屏蔽封盖  | 6. 丁字连接器  | 1. Shield cover    | 6. T-connector      |
| 2. 绝缘塞   | 7. 双头螺栓   | 2. Insulating plug | 7. Stud bolt        |
| 3. M12螺母 | 8. 设备套管   | 3. M12 nut         | 8. Equipment casing |
| 4. 弹垫    | 9. 十字连接器  | 4. Spring washer   | 9. Cross connector  |
| 5. 平垫    | 10. 屏蔽型母线 | 5. Flat washer     | 10. Shielded bus    |

## 组合示意图 Combination Diagram





EH PTZT 15kV-200A肘型电缆接头  
EH PTZT 15kV-200A Loadbreak elbow connector

### 概述 General

PT肘型接头用于为电动操作机构提供操作电源或计量保护用的JDZ12A-10R互感器高压侧的全绝缘、全屏蔽、全密封连接，适用电缆截面35-120mm<sup>2</sup>。

为全绝缘、全屏蔽、全密封产品插拔连接非常简单，有可靠的防松脱装置。

适用于15kV电缆截面为35-50mm<sup>2</sup>的交联聚乙烯电缆。

PT Elbow cable gland is a fully-shielded and insulated plug-in termination for connection underground cable to distribution power system of pad-mound transformer, surrounding power supply branch box, cable branch box equipped with load break bushings. The elbow connector and bushing insert comprise the essential components of all load break connections. It can mate with 200A Bushing insert and 200A jack of T-II Connector, 200A Junction, load break bushing insert (Load break rotatable feedthru insert), apparatus bushing and 600A/200A bushing extender. It can operating switch of 200A loading current. The test point is used to connect Hot Voltage Indicator. The Load break Elbows are molded using high quality sulfur-cured insulating and semi-conducting EPDM rubber.

The available conductor cross section is 35-50mm<sup>2</sup> for 15kv cable. The conductive pole W/ARCExtinguishes function.

### 标准包装 Scope of delivery

- |           |                                  |
|-----------|----------------------------------|
| ● 电缆接头    | ● Elbow connector                |
| ● 接地线     | ● Grounding wire                 |
| ● 熔断器     | ● Fuse                           |
| ● 清洁巾     | ● Clearing paper                 |
| ● 硅脂      | ● Silicone lubricant             |
| ● 压接端子    | ● Conductor cable lug            |
| ● 安装指导说明书 | ● Installation instruction sheet |
| ● 合格证     | ● Quality certificate            |

### 订货信息 Order Information

产品名称 Description	订货编号 Reference No.	额定电压 Continuous operating voltage	额定电流 Continuous nominal current
15/200PT肘型接头 Elbow joint	EH PTZT-15/200A	15kV	200A

### 定货编号说明 Inference Information

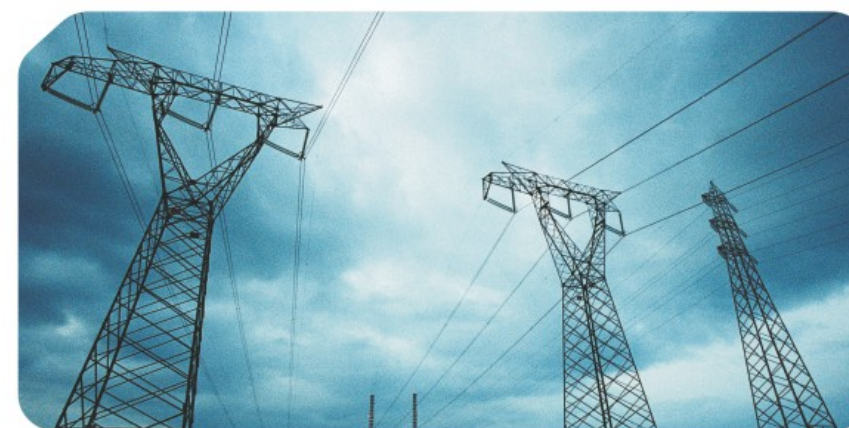
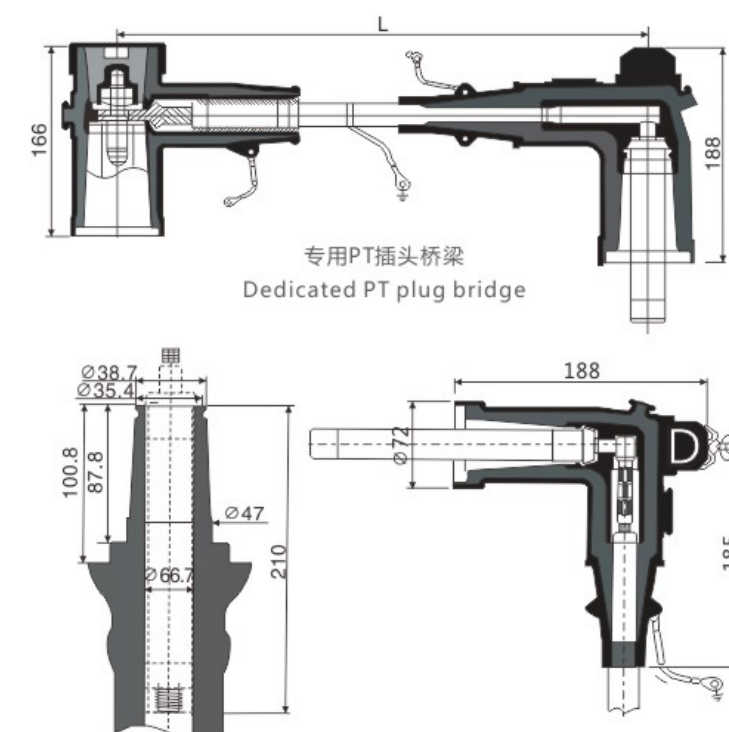


### 概述 General

用于为电动操作机构提供操作电源或计量保护用的JDZ12A-10R互感器离压侧的全绝缘、全屏蔽、全密封连接，适合电缆截面25~120mm<sup>2</sup>。拔插连接非常简单，有可靠的防松脱装置。

The JDZ12A-10R transformer is fully insulated, shielded and sealed on the pressure-free side for providing operating power supply or metering protection for electric operating mechanism, suitable for cable section of 25~120mm<sup>2</sup>. The plug and plug connection is very simple, with a reliable release device.

### 外形及尺寸安装 Shape and size installation



## EH SYZD-15kV/630A 开关柜外锥型套管试验终端

EH SYZD-15kV/630A Tapered casing test terminal of switch cabinet

### 应用 Application

开关柜外锥形设备在出厂或现场需要进行交流耐压或冲击电压试验时，往往需要安装电缆接头或做更多的绝缘防护工程，而实际电缆接头安装需要非常高的技巧，同时试验成本也非常的高昂，尤其在高电压等级上体现明显。

为解决这一难题，我公司经过多次反复试验，开发出一种新型的试验终端产品，完全可以解决这类问题，具有安装简单，试验可靠等许多优点，是成套设备厂出厂检测，供电局安装公司现场检测的好帮手。

When switchgear conical equipment needs ac withstand voltage or impulse voltage test in factory or on site, it is often necessary to install cable joint or do more insulation protection works. However, the actual installation of cable joint requires very high skills, and the test cost is also very high, especially evident in high voltage grade.

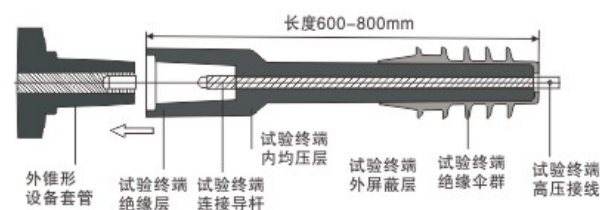
In order to solve this problem, our company has developed a new type of test terminal product after repeated tests, which can completely solve this kind of problem. It has many advantages, such as simple installation, reliable test and so on. It is a good helper for factory inspection of complete set of equipment and on-site inspection of power supply bureau installation company.

### 定货编号说明 Inference Information

EH SYZD - 15 / 630

套管锥度：630/600/1250A  
Casing taper: 630/600/1250A  
电压等级：12/24/35kV  
Voltage level: 12/24/35kV

### 试验终端安装示意图 Installation diagram of test terminal



## EH CSB-624试验终端

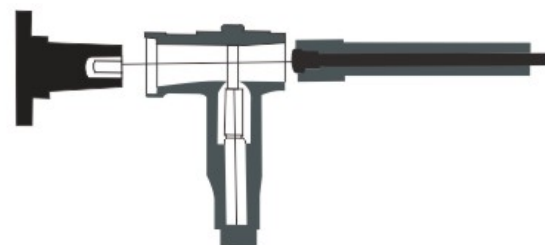
EH CSB-624 Test terminal

### 概述 General

电缆接头专用测试棒主要用于电缆接头安装完成后，需要对电缆及开关柜进行测试二研发出来的试验过程用测试带代替绝缘塞，即可进行交直流耐压试验，结构简单，使用方便。

The special test rod for cable joint is mainly used for testing cables and switch cabinets after the cable joint is installed. The test strip is used to replace the insulation plug in the developed test process, and the ac-DC voltage withstand test can be carried out. The structure is simple and easy to use.

### 外形及尺寸安装 Shape and size installation



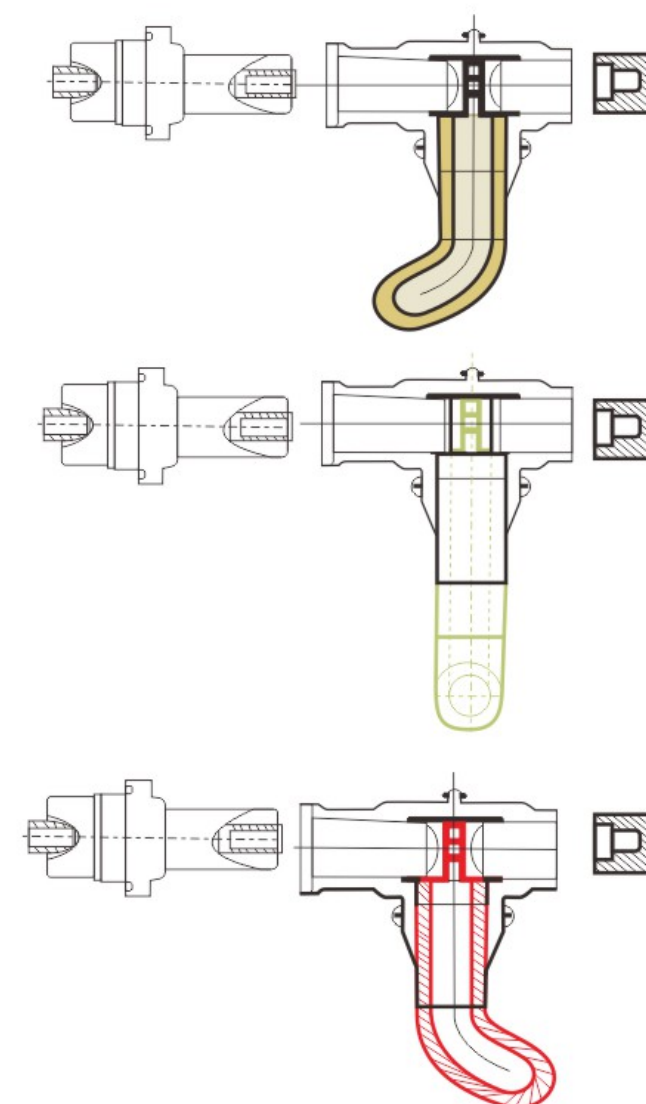
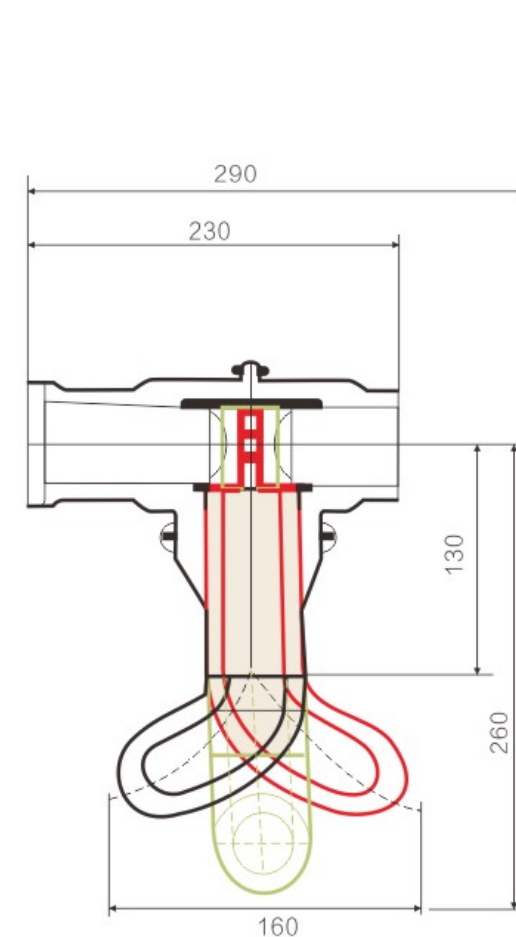
## 提升柜母联

Lift the motherboard

### 设计特点 Design features

- 硬母线连接，可在工厂预装，对安装位置无限制，结构紧凑简单。  
1250A和630A均可实现
- 成本相对便宜，安装简单快捷。
- Hard bus connection, can be pre-installed in the factory, unlimited installation location, compact and simple structure. Both 1250A and 630A can be achieved.
- It is relatively cheap and easy to install.

### 外形及尺寸安装 Shape and size installation



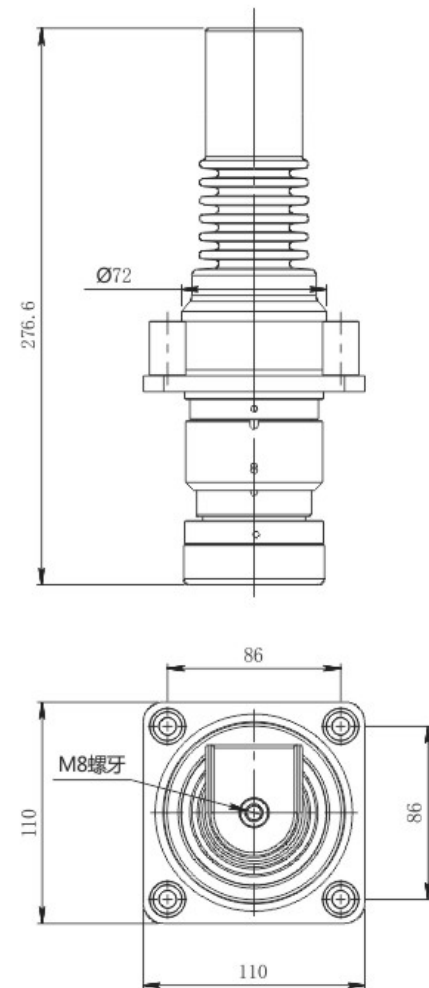


**10kV 环保柜快插**  
10kV Environmental cabinet quick connector

技术参数 Technical parameter

型号 Model	EHHBKC-15/250-TC
电压 Voltage	10kV
额定电流 Rated current	250A
使用额定频率 Use rated frequency	50Hz
交流耐压 AC withstand voltage	45kV/1min, 不击穿, 不闪络 45kV/1min, no breakdown, no flashover
局部放电 Partial discharge	≤10PC
温升 Temperature rise	≤55K

外形尺寸图 Dimensions



**10kV 旁路作业柔性快接电缆—OT+快速插拔接头（螺栓连接型）**  
10kV bypass operation flexible quick connect cable ot+ quick plug connector (bolt connection type)

产品简介 Product introduction

- 插头端口采用铝合金材质，机械强度大，不易变形，损坏，耐磨；
- 外壳采用铝合金材质，轻便，可触摸；
- 绝缘材料采用高强度三元乙丙材质，电气性能优异，不易磕碰损坏；
- 产品具有快速插拔，安全可靠，防护性能强；
- 一端为快速插拔接头，可与中间接头、旁路开关连接；一端为户外终端头，螺栓连接型；可根据需求定制不同长度的规格。
- The plug port is made of aluminum alloy, with high mechanical strength, not easy to deform, damage and wear resistance;
- The shell is made of aluminum alloy, which is light and touchable;
- The insulation material is made of high-strength ethylene propylene diene, which has excellent electrical performance and is not easy to be damaged by collision;
- The product has fast plug-in, safe and reliable, and strong protection performance.
- One end is a quick plug connector, which can be connected with the intermediate connector and bypass switch; One end is an outdoor terminal head, bolt connection type; Different length specifications can be customized according to requirements.

技术参数 Technical parameter

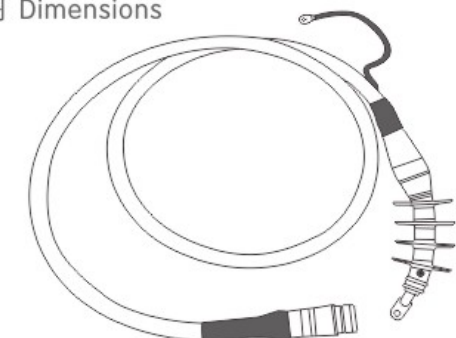
型号 Model	PLZ-50
电压 Voltage	10kV
额定电流 Rated current	250A
使用额定频率 Use rated frequency	50Hz
交流耐压 AC withstand voltage	45kV/1min, 不击穿, 不闪络 45kV/1min, no breakdown, no flashover
局部放电 Partial discharge	≤10PC
温升 Temperature rise	≤55K

应用领域 Application area

10kV旁路系统的标准组件，安装在旁路电缆末端，可用于中间接头、旁路装备之间的电气连接。

Standard components of 10kV bypass system, installed at the end of bypass cable, can be used for electrical connection between intermediate connector and bypass equipment.

外形尺寸图 Dimensions





### 产品简介 Product introduction

- 插头端口采用铝合金材质，机械强度大，不易变形，损坏，耐磨；
- 外壳采用铝合金材质，轻便，可触摸；
- 绝缘材料采用高强度三元乙丙材质，电气性能优异，不易磕碰损坏；
- 产品具有快速插拔，安全可靠，防护性能强。

- The plug port is made of aluminum alloy, with high mechanical strength, not easy to deform, damage and wear resistance;
- The shell is made of aluminum alloy, which is light and touchable;
- The insulation material is made of high-strength ethylene propylene diene, which has excellent electrical performance and is not easy to be damaged by collision;
- The product has fast plug-in, safe and reliable, and strong protection performance.

### 技术参数 Technical parameter

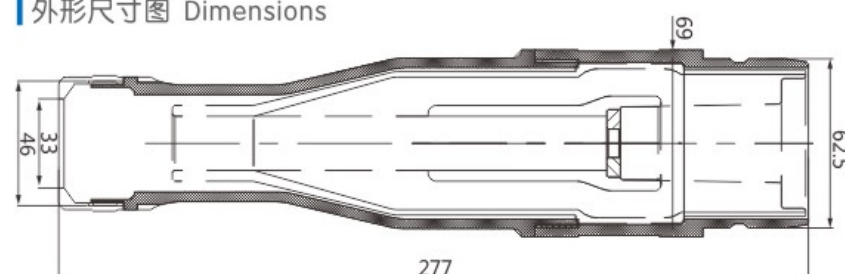
型号 Model	EHKSJT-15/250
电压 Voltage	10kV
额定电流 Rated current	250A
使用额定频率 Use rated frequency	50Hz
交流耐压 AC withstand voltage	45kV/1min, 不击穿, 不闪络 45kV/1min, no breakdown, no flashover
局部放电 Partial discharge	≤10PC
温升 Temperature rise	≤55K

### 应用领域 Application area

10kV旁路系统的标准组件，安装在旁路电缆末端，可用于中间接头、旁路装备之间的电气连接。

Standard components of 10kV bypass system, installed at the end of bypass cable, can be used for electrical connection between intermediate connector and bypass equipment.

### 外形尺寸图 Dimensions



### 产品简介 Product introduction

- 插头端口采用铝合金材质，机械强度大，不易变形，损坏，耐磨；
- 外壳采用铝合金材质，轻便，可触摸；
- 绝缘材料采用高强度三元乙丙材质，电气性能优异，不易磕碰损坏；
- 产品具有快速插拔，安全可靠，防护性能强。

- The plug port is made of aluminum alloy, with high mechanical strength, not easy to deform, damage and wear resistance;
- The shell is made of aluminum alloy, which is light and touchable;
- The insulation material is made of high-strength ethylene propylene diene, which has excellent electrical performance and is not easy to be damaged by collision;
- The product has fast plug-in, safe and reliable, and strong protection performance.

### 技术参数 Technical parameter

型号 Model	EHKSJTM-15/250
电压 Voltage	10kV
额定电流 Rated current	250A
使用额定频率 Use rated frequency	50Hz
交流耐压 AC withstand voltage	45kV/1min, 不击穿, 不闪络 45kV/1min, no breakdown, no flashover
局部放电 Partial discharge	≤10PC
温升 Temperature rise	≤55K

### 应用领域 Application area

10kV旁路系统的标准组件，安装在旁路电缆末端，可用于中间接头、旁路装备之间的电气连接。

Standard components of 10kV bypass system, installed at the end of bypass cable, can be used for electrical connection between intermediate connector and bypass equipment.

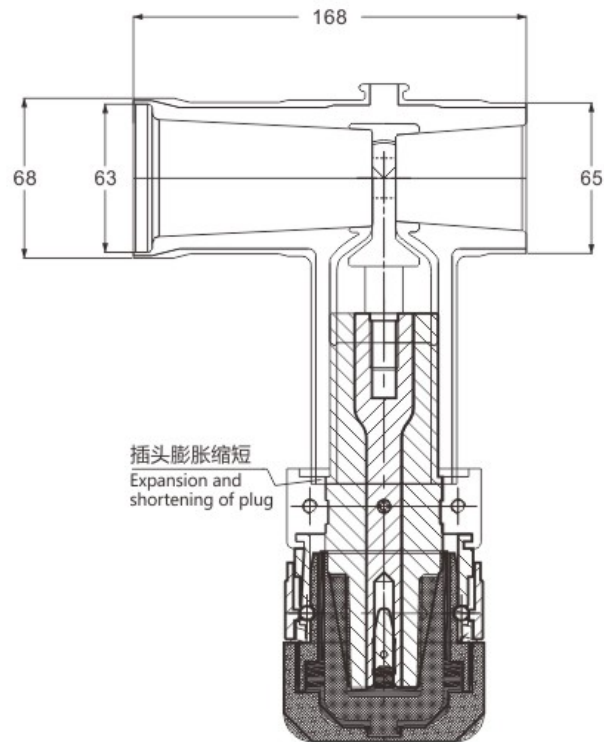
10kV 前插型快插  
10kV Front type quick connector



技术参数 Technical parameter

型号 Model	EHQ3KC-15/250
电压 Voltage	10kV
额定电流 Rated current	250A
使用额定频率 Use rated frequency	50Hz
交流耐压 AC withstand voltage	45kV/1min, 不击穿, 不闪络 45kV/1min, no breakdown, no flashover
局部放电 Partial discharge	≤10PC
温升 Temperature rise	≤55K

外形尺寸图 Dimensions



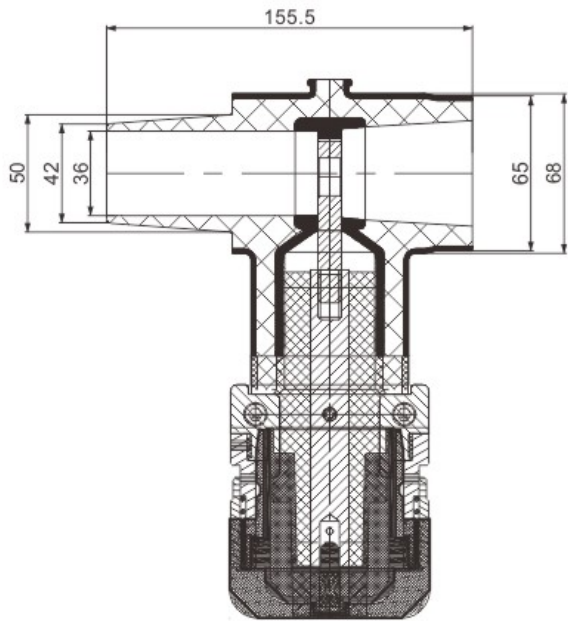
10kV 后插型快插  
10kV Rear type quick connector



技术参数 Technical parameter

型号 Model	EHH3KC-15/250
电压 Voltage	10kV
额定电流 Rated current	250A
使用额定频率 Use rated frequency	50Hz
交流耐压 AC withstand voltage	45kV/1min, 不击穿, 不闪络 45kV/1min, no breakdown, no flashover
局部放电 Partial discharge	≤10PC
温升 Temperature rise	≤55K

外形尺寸图 Dimensions



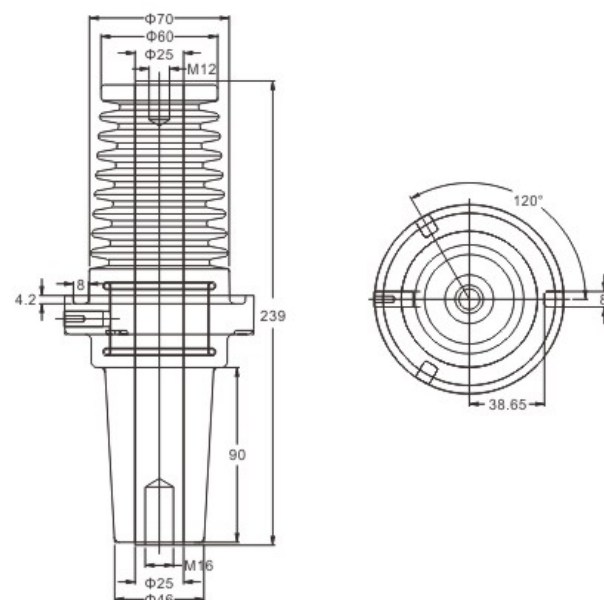
### EH-12-239环保柜顶扩套管

EH-12-239 Environmental protection cabinet top expansion sleeve

#### 技术参数 Technical Parameters

额定电压 Rated Voltage	额定电流 Rated Current	工频耐压 Power-frequency Withstand Voltage	局部放电量 Partial Discharge	感应电容 Inductive Capacitance
12kV	630A	45kV/min	14.4kV<3pc	18±2pF

#### 外形尺寸图 Dimensions



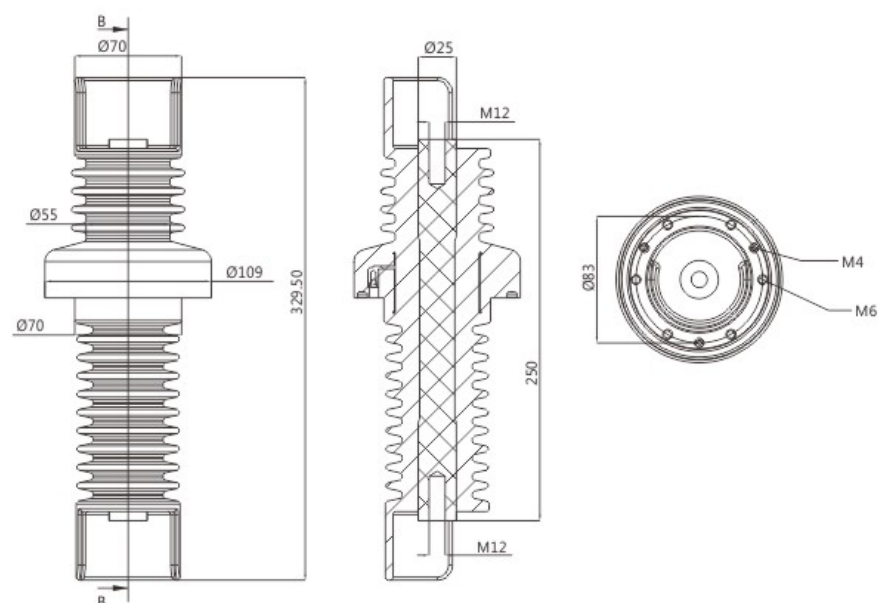
### EH-12-250环保柜计量套管

EH-12-250 Environmental protection cabinet metering sleeve

#### 技术参数 Technical Parameters

额定电压 Rated Voltage	额定电流 Rated Current	工频耐压 Power-frequency Withstand Voltage	局部放电量 Partial Discharge	感应电容 Inductive Capacitance
12kV	630A	45kV/min	14.4kV<3pc	18±2pF

#### 外形尺寸图 Dimensions



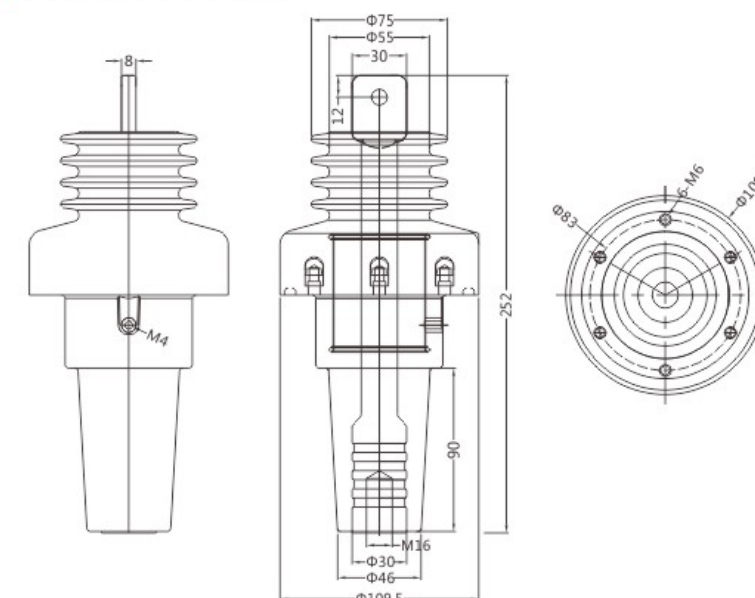
### EH-12-252环保柜顶扩套管

EH-12-252 Environmental protection cabinet top expansion sleeve

#### 技术参数 Technical Parameters

额定电压 Rated Voltage	额定电流 Rated Current	工频耐压 Power-frequency Withstand Voltage	局部放电量 Partial Discharge	感应电容 Inductive Capacitance
12kV	630A	45kV/min	14.4kV<3pc	18±2pF

#### 外形尺寸图 Dimensions



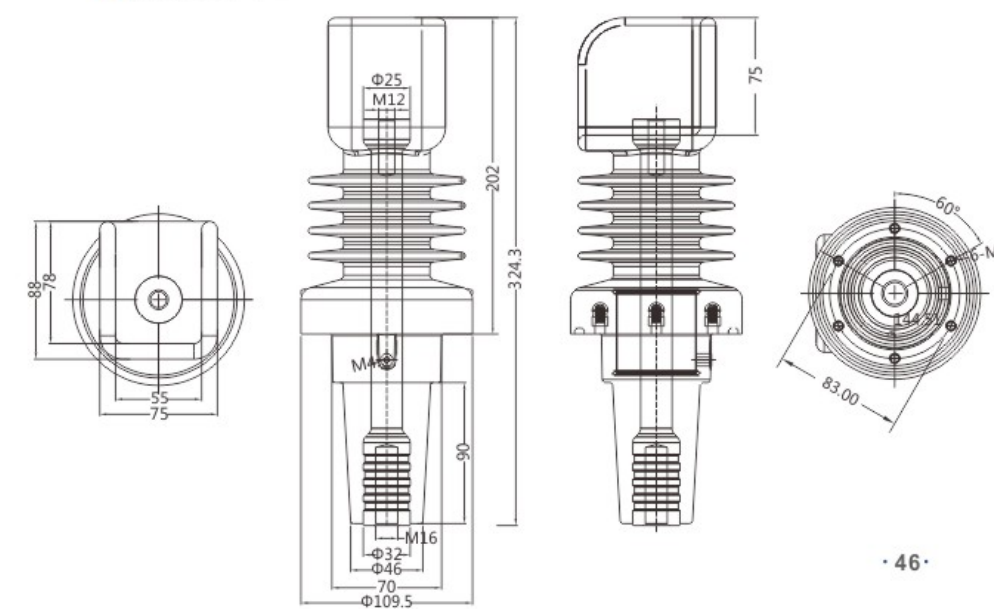
### EH-12-259.5环保柜套管

EH-12-259.5 Environmental protection cabinet casing

#### 技术参数 Technical Parameters

额定电压 Rated Voltage	额定电流 Rated Current	工频耐压 Power-frequency Withstand Voltage	局部放电量 Partial Discharge	感应电容 Inductive Capacitance
12kV	630A	45kV/min	14.4kV<3pc	18±2pF

#### 外形尺寸图 Dimensions



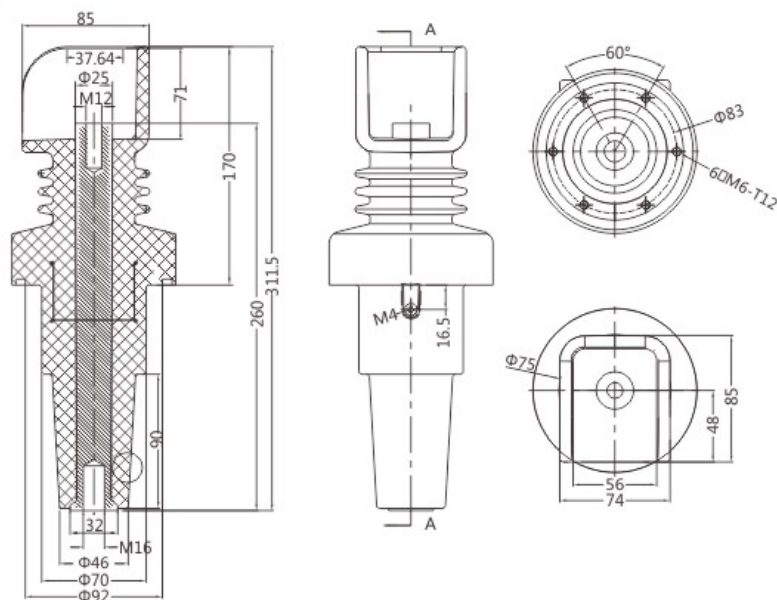
## EH-12-260环保柜套管

EH-12-260 Environmental protection cabinet casing

### 技术参数 Technical Parameters

额定电压 Rated Voltage	额定电流 Rated Current	工频耐压 Power-frequency Withstand Voltage	局部放电量 Partial Discharge	感应电容 Inductive Capacitance
12kV	630A	45kV/min	14.4kV<3pc	18±2pF

### 外形尺寸图 Dimensions



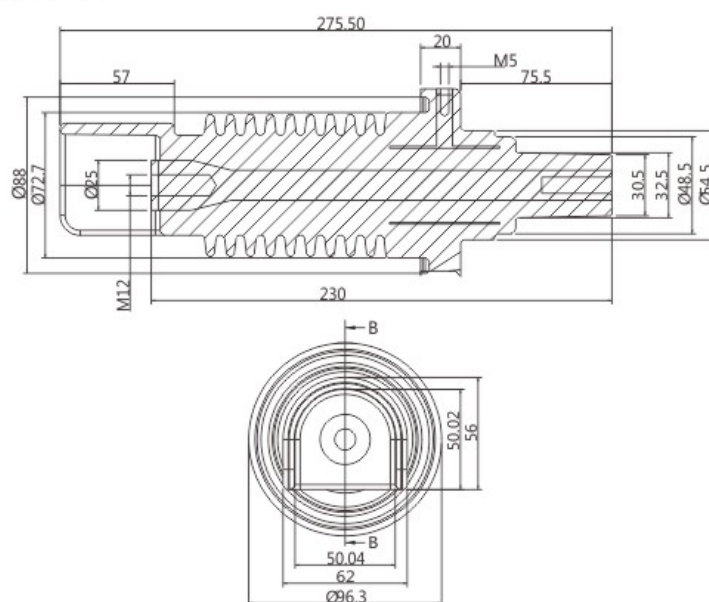
### EH-230-250A环保柜取电套管

EH-230-250A Environmental protection cabinet power supply bushing

## 技术参数 Technical Parameters

额定电压 Rated Voltage	额定电流 Rated Current	工频耐压 Power-frequency Withstand Voltage	局部放电 Partial Discharge
12kV	250A	45kV/min	14.4kV<3pc

### 外形尺寸图 Dimensions



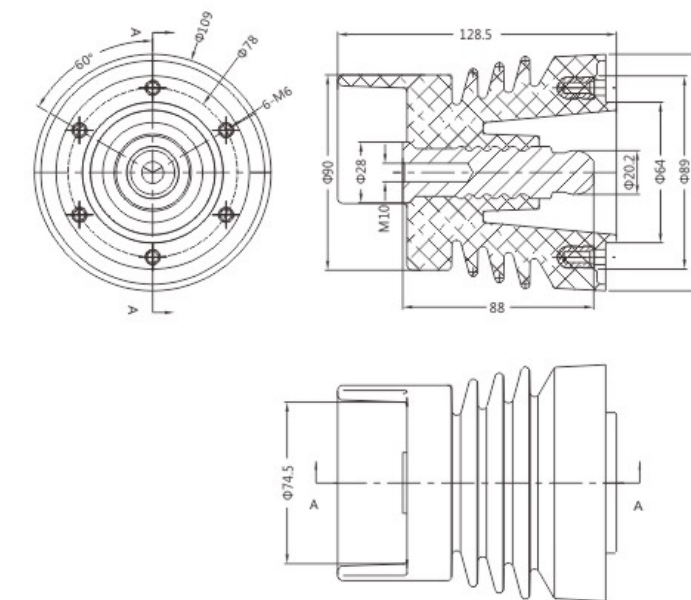
### EH-12-88环保柜侧扩套管

EH-12-88 Environmental protection cabinet side expansion sleeve

### 技术参数 Technical Parameters

额定电压 Rated Voltage	额定电流 Rated Current	工频耐压 Power-frequency Withstand Voltage	局部放电 Partial Discharge
12kV	630A	45kV/min	14.4kV<3pc

### 外形尺寸图 Dimensions



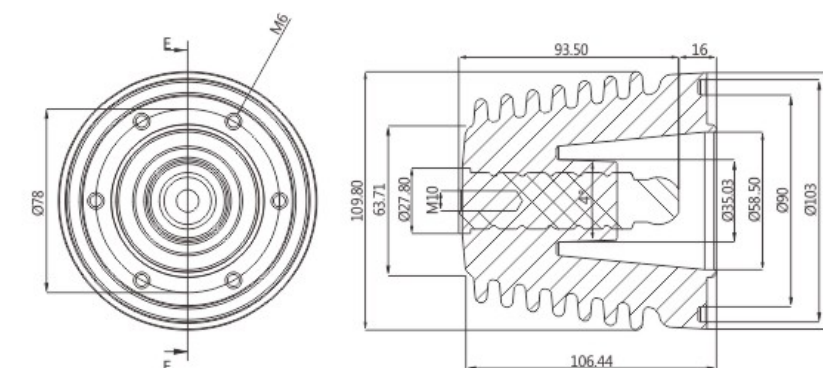
### EH-93.5常压密封侧扩套管

EH-93.5 Atmospheric sealing side expansion sleeve

### 技术参数 Technical Parameters

额定电压 Rated Voltage	额定电流 Rated Current	工频耐压 Power-frequency Withstand Voltage	局部放电量 Partial Discharge
12kV	630A	45kV/min	14.4kV<3pc

### 外形尺寸图 Dimensions



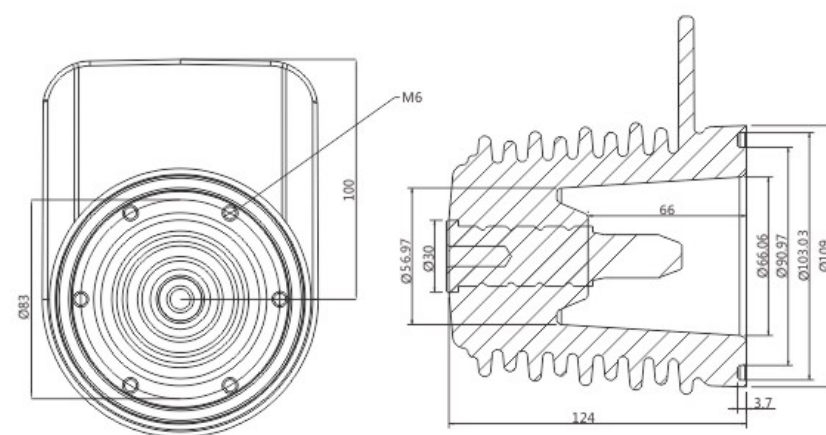
### EH-98.2常压密封侧扩套管

EH-98.2 Atmospheric sealing side expansion sleeve

#### 技术参数 Technical Parameters

额定电压 Rated Voltage	额定电流 Rated Current	工频耐压 Power-frequency Withstand Voltage	局部放电量 Partial Discharge
12kV	630A	45kV/min	14.4kV<3pc

#### 外形尺寸图 Dimensions



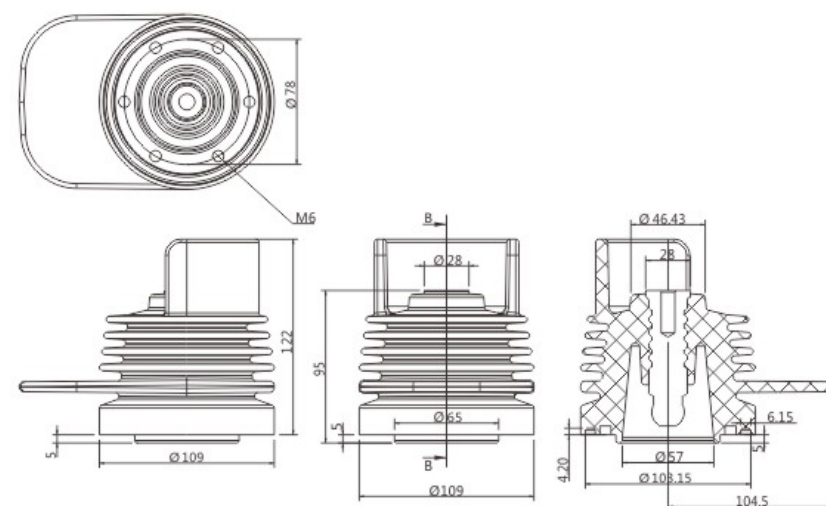
### EH-127环保柜侧扩套管

EH-127 Environmental protection cabinet side expansion sleeve

#### 技术参数 Technical Parameters

额定电压 Rated Voltage	额定电流 Rated Current	工频耐压 Power-frequency Withstand Voltage	局部放电量 Partial Discharge	感应电容 Inductive Capacitance
12kV	630A	45kV/min	14.4kV<3pc	18±2pF

#### 外形尺寸图 Dimensions



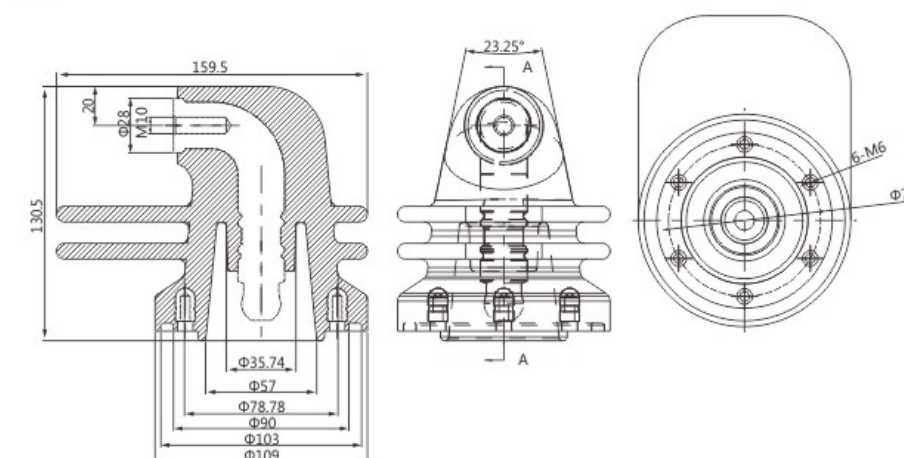
### EH-12-130环保柜侧扩套管 (II型)

EH-12-130 Side expansion sleeve of special-shaped environmental protection cabinet (type II)

#### 技术参数 Technical Parameters

额定电压 Rated Voltage	额定电流 Rated Current	工频耐压 Power-frequency Withstand Voltage	局部放电量 Partial Discharge
12kV	630A	45kV/min	14.4kV<3pc

#### 外形尺寸图 Dimensions



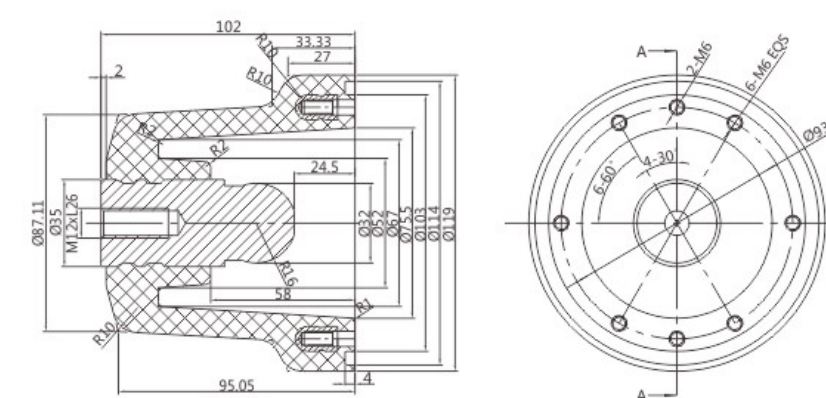
### EH-12-24/1250A侧扩套管

EH-12-24/1250A Side expansion sleeve

#### 技术参数 Technical Parameters

额定电压 Rated Voltage	额定电流 Rated Current	工频耐压 Power-frequency Withstand Voltage	局部放电量 Partial Discharge	感应电容 Inductive Capacitance
12/24kV	1250A	45/65kV/min	14.4/28.8kV<5pc	18±2pF

#### 外形尺寸图 Dimensions



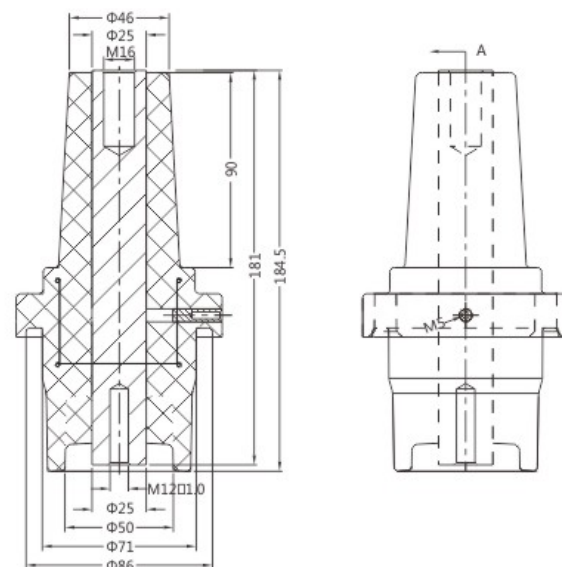
## EH-12-181方形套管

EH-12-181 Square casing

### 技术参数 Technical Parameters

额定电压 Rated Voltage	额定电流 Rated Current	工频耐压 Power-frequency Withstand Voltage	局部放电量 Partial Discharge	感应电容 Inductive Capacitance
12kV	630A	45kV/min	14.4kV<3pc	18±2pF
24kV	630A	75kV/min	26.4kV<3pc	18±2pF

### 外形尺寸图 Dimensions



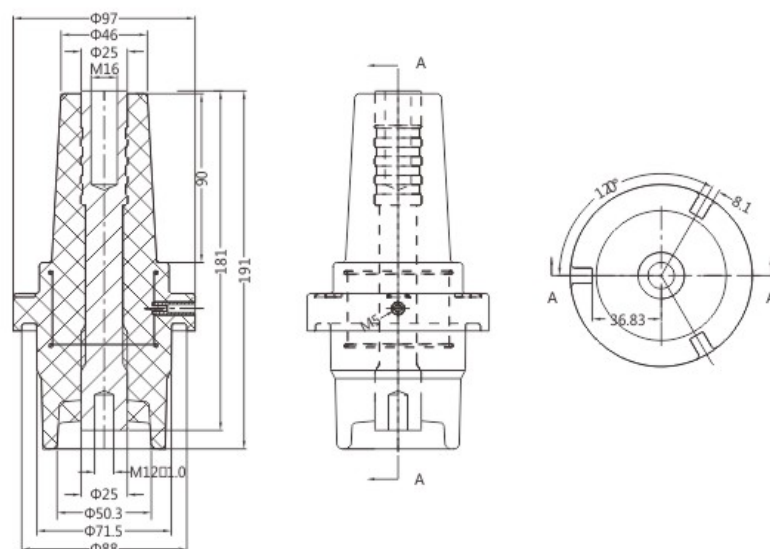
## EH-12-181圆形套管

EH-12-181 Circular casing

### 技术参数 Technical Parameters

额定电压 Rated Voltage	额定电流 Rated Current	工频耐压 Power-frequency Withstand Voltage	局部放电量 Partial Discharge	感应电容 Inductive Capacitance
12kV	630A	45kV/min	14.4kV<3pc	18±2pF
24kV	630A	75kV/min	26.4kV<3pc	18±2pF

### 外形尺寸图 Dimensions



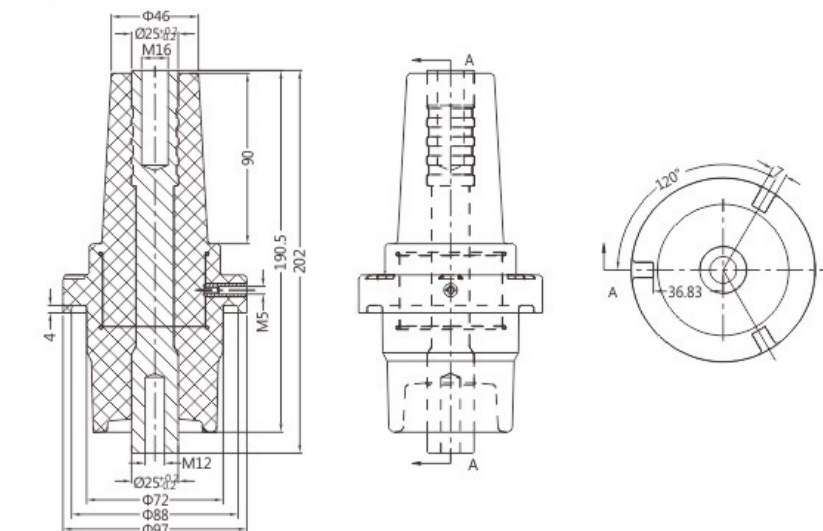
## EH-12-202套管

EH-12-202 Casing

### 技术参数 Technical Parameters

额定电压 Rated Voltage	额定电流 Rated Current	工频耐压 Power-frequency Withstand Voltage	局部放电量 Partial Discharge	感应电容 Inductive Capacitance
12kV	630A	45kV/min	14.4kV<3pc	18±2pF
12kV	1250A	45kV/min	14.4kV<3pc	18±2pF
24kV	630A	75kV/min	26.4kV<3pc	18±2pF

### 外形尺寸图 Dimensions



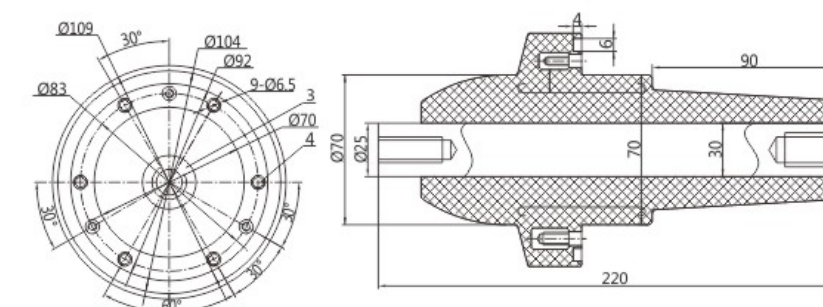
## EH-12-220套管

EH-12-220 Casing

### 技术参数 Technical Parameters

额定电压 Rated Voltage	额定电流 Rated Current	工频耐压 Power-frequency Withstand Voltage	局部放电量 Partial Discharge	感应电容 Inductive Capacitance
12kV	630A	45kV/min	14.4kV<3pc	18±2pF
24kV	630A	75kV/min	26.4kV<3pc	18±2pF

### 外形尺寸图 Dimensions



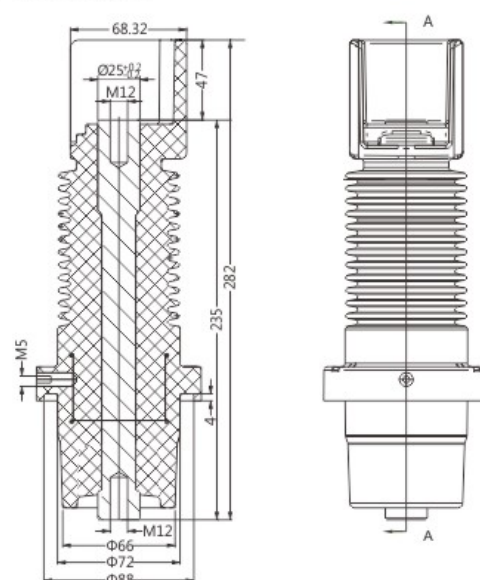
## EH-12-235套管

EH-12-235 Casing

技术参数 Technical Parameters

额定电压 Rated Voltage	额定电流 Rated Current	工频耐压 Power-frequency Withstand Voltage	局部放电量 Partial Discharge	感应电容 Inductive Capacitance
12kV	630A	45kV/min	14.4kV<3pc	18±2pF
12kV	1250A	45kV/min	14.4kV<3pc	18±2pF

外形尺寸图 Dimensions



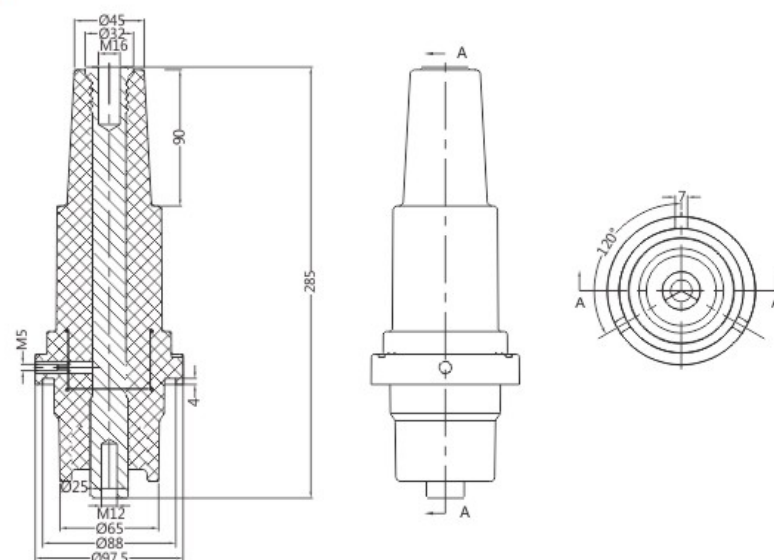
## EH-12-250环保柜计量套管

EH-12-250 Environmental protection cabinet metering sleeve

技术参数 Technical Parameters

额定电压 Rated Voltage	额定电流 Rated Current	工频耐压 Power-frequency Withstand Voltage	局部放电量 Partial Discharge	感应电容 Inductive Capacitance
12kV	630A	45kV/min	14.4kV<3pc	18±2pF
12kV	1250A	45kV/min	14.4kV<3pc	18±2pF

外形尺寸图 Dimensions



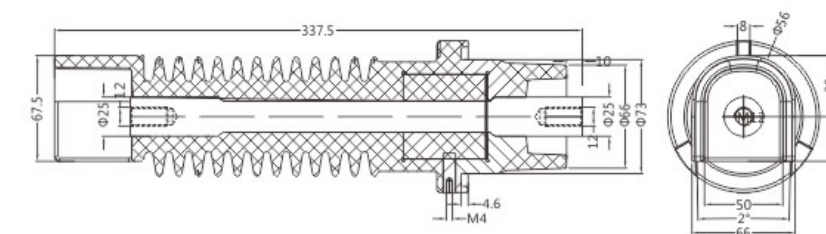
## EH-24-289计量柜套管

EH-24-289 Metering CABINET CASING

技术参数 Technical Parameters

额定电压 Rated Voltage	额定电流 Rated Current	工频耐压 Power-frequency Withstand Voltage	局部放电量 Partial Discharge	感应电容 Inductive Capacitance
24kV	630A	45kV/min	14.4kV<3pc	18±2pF

外形尺寸图 Dimensions



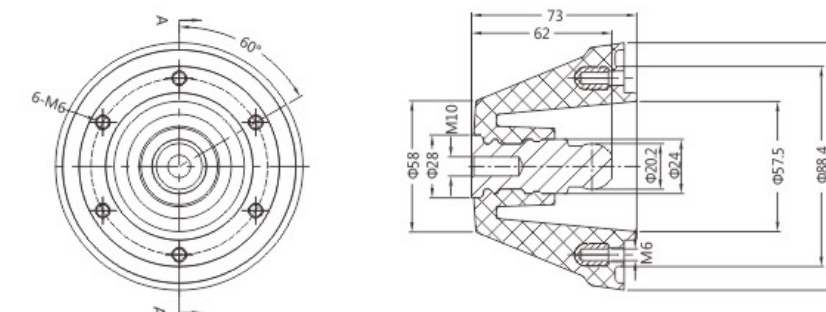
## EH-12-62侧扩套管

EH-12-62 Side expansion casing

技术参数 Technical Parameters

额定电压 Rated Voltage	额定电流 Rated Current	工频耐压 Power-frequency Withstand Voltage	局部放电量 Partial Discharge
12kV	630A	45kV/min	14.4kV<3pc

外形尺寸图 Dimensions



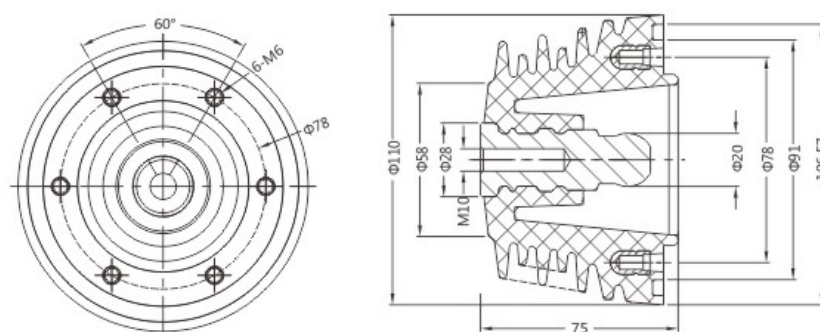
### EH-12-64.5侧扩套管

EH-12-64.5 Side expansion casing

#### 技术参数 Technical Parameters

额定电压 Rated Voltage	额定电流 Rated Current	工频耐压 Power-frequency Withstand Voltage	局部放电量 Partial Discharge
12kV	630A	45kV/min	14.4kV<3pc

#### 外形尺寸图 Dimensions



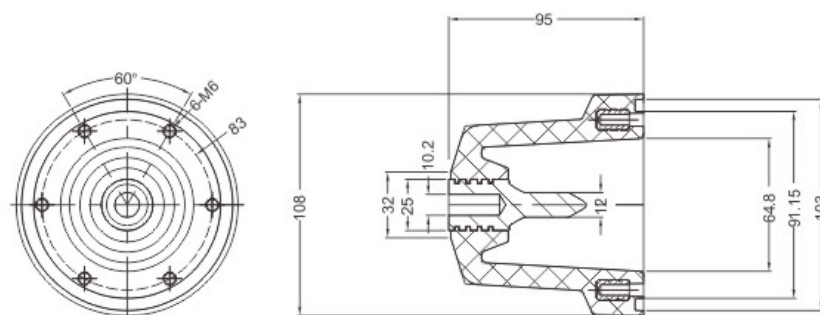
### EH-12-67侧扩套管

EH-12-67 Side expansion casing

#### 技术参数 Technical Parameters

额定电压 Rated Voltage	额定电流 Rated Current	工频耐压 Power-frequency Withstand Voltage	局部放电量 Partial Discharge
12kV	630A	45kV/min	14.4kV<3pc

#### 外形尺寸图 Dimensions



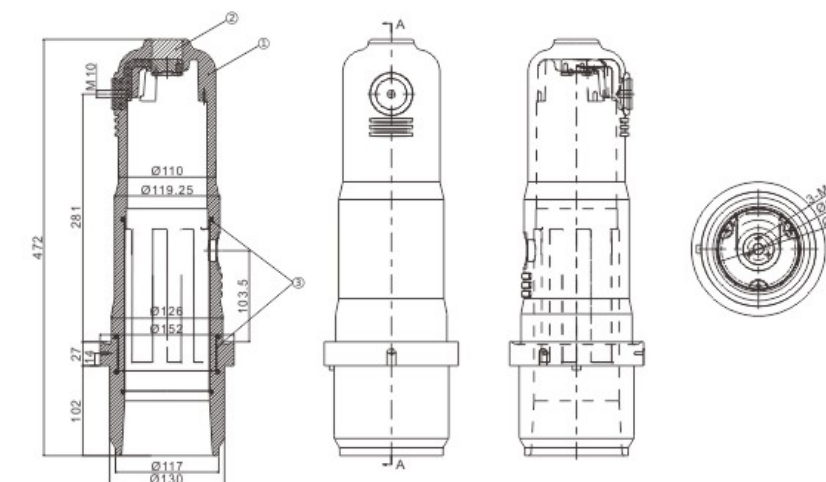
### EH-12-475熔丝筒(侧出线)

EH-12-475 Fuse cartridge (side outlet)

#### 技术参数 Technical Parameters

额定电压 Rated Voltage	额定电流 Rated Current	工频耐压 Power-frequency Withstand Voltage	局部放电量 Partial Discharge	感应电容 Inductive Capacitance
12kV	630A	45kV/min	14.4kV<3pc	18±2pF

#### 外形尺寸图 Dimensions



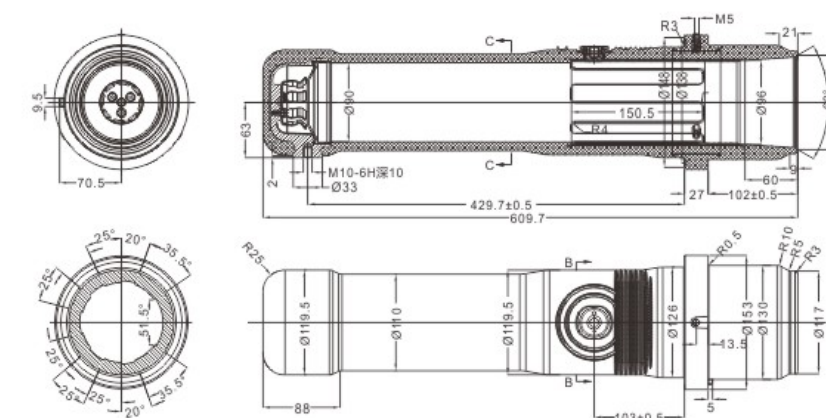
### EH 24kV固封式熔丝筒

EH 24kV Fixed fuse cartridge

#### 技术参数 Technical Parameters

额定电压 Rated Voltage	额定电流 Rated Current	工频耐压 Power-frequency Withstand Voltage	局部放电量 Partial Discharge	感应电容 Inductive Capacitance
24kV	630A	45kV/min	14.4kV<3pc	18±2pF

#### 外形尺寸图 Dimensions





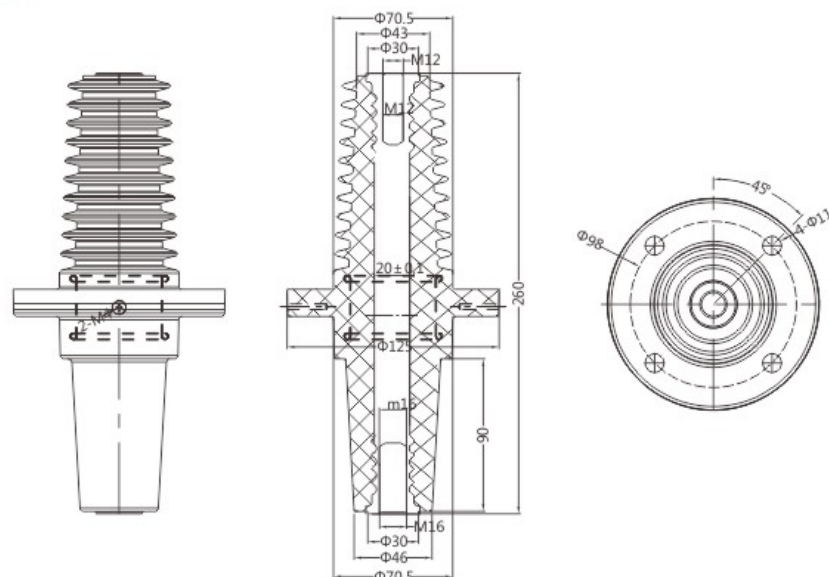
### EH-12-260一体式伞裙套管

EH-12-260 One-piece umbrella skirt casing

#### 技术参数 Technical Parameters

额定电压 Rated Voltage	额定电流 Rated Current	工频耐压 Power-frequency Withstand Voltage	局部放电量 Partial Discharge	感应电容 Inductive Capacitance
12kV	630A	45kV/min	14.4kV<3pc	18±2pF

#### 外形尺寸图 Dimensions



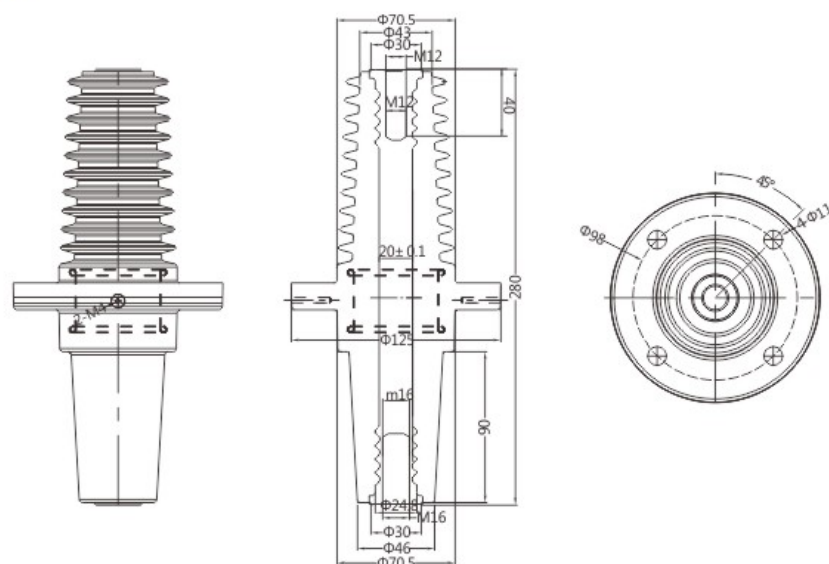
### EH-12-280一体式伞裙套管

EH-12-280 One-piece umbrella skirt casing

#### 技术参数 Technical Parameters

额定电压 Rated Voltage	额定电流 Rated Current	工频耐压 Power-frequency Withstand Voltage	局部放电量 Partial Discharge	感应电容 Inductive Capacitance
12kV	630A	45kV/min	14.4kV<3pc	18±2pF

#### 外形尺寸图 Dimensions



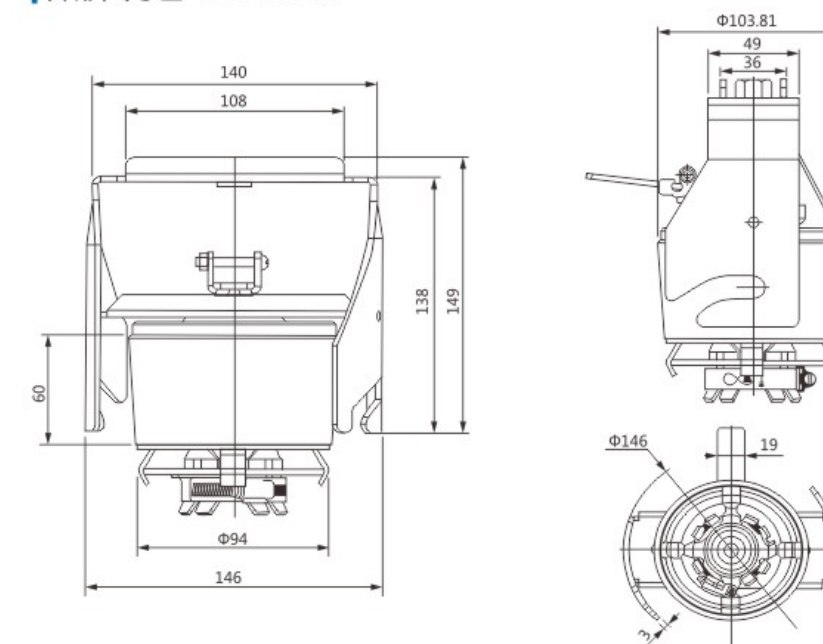
### EH 12-24kV手提盖

EH 12-24kV Hand cover

#### 技术参数 Technical Parameters

额定电压 Rated Voltage	工频耐压 Power-frequency Withstand Voltage	局部放电量 Partial Discharge
12kV	45kV/min	14.4kV<3pc

#### 外形尺寸图 Dimensions



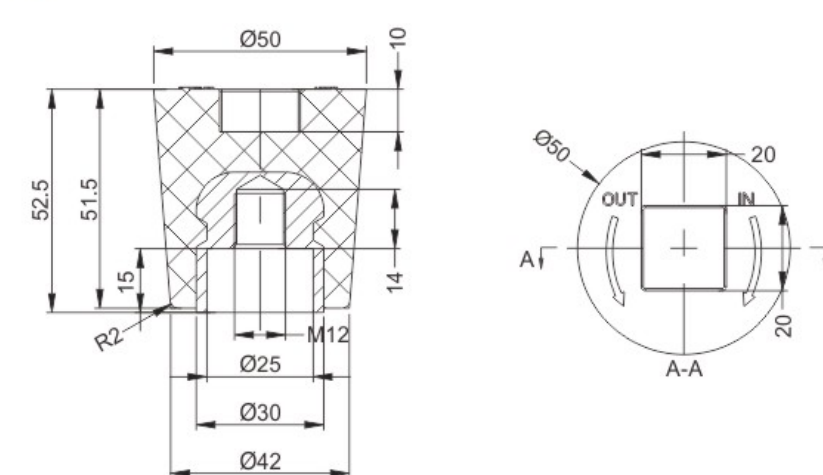
### 10kV绝缘塞

10kV Insulating plug

#### 技术参数 Technical Parameters

额定电压 Rated Voltage	工频耐压 Power-frequency Withstand Voltage
12kV	45kV/min

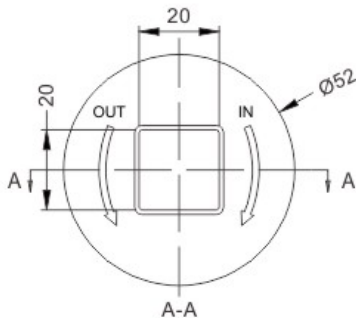
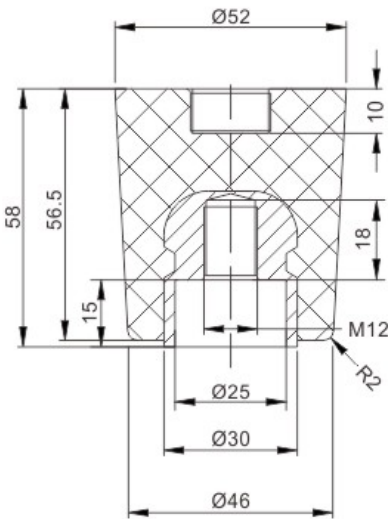
#### 外形尺寸图 Dimensions



技术参数 Technical Parameters

额定电压 Rated Voltage	工频耐压 Power-frequency Withstand Voltage
24kV	65kV/min

外形尺寸图 Dimensions



Handwriting practice area with horizontal lines.